

Easy Provisioning via WiFi

(WizFi 210 Application Notes)



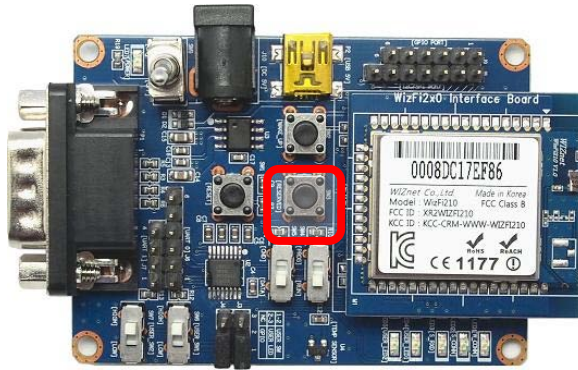
©2011 WIZnet Co., Ltd. All Rights Reserved.

☞ For more information, visit our website at <http://www.wiznet.co.kr>

1. Limited AP & Web Mode

1.1 Change mode to <Limited AP & Web mode>

If you click the <Reserved Button>(GPIO21 or GPIO10) button twice consecutively, the WizFi210 is restored to factory and changed <AP & Web mode>.



The IP address of WizFi210 is shown below.

IP:192.168.1.1/Subnet:255.255.255.0/Gateway:192.168.1.1

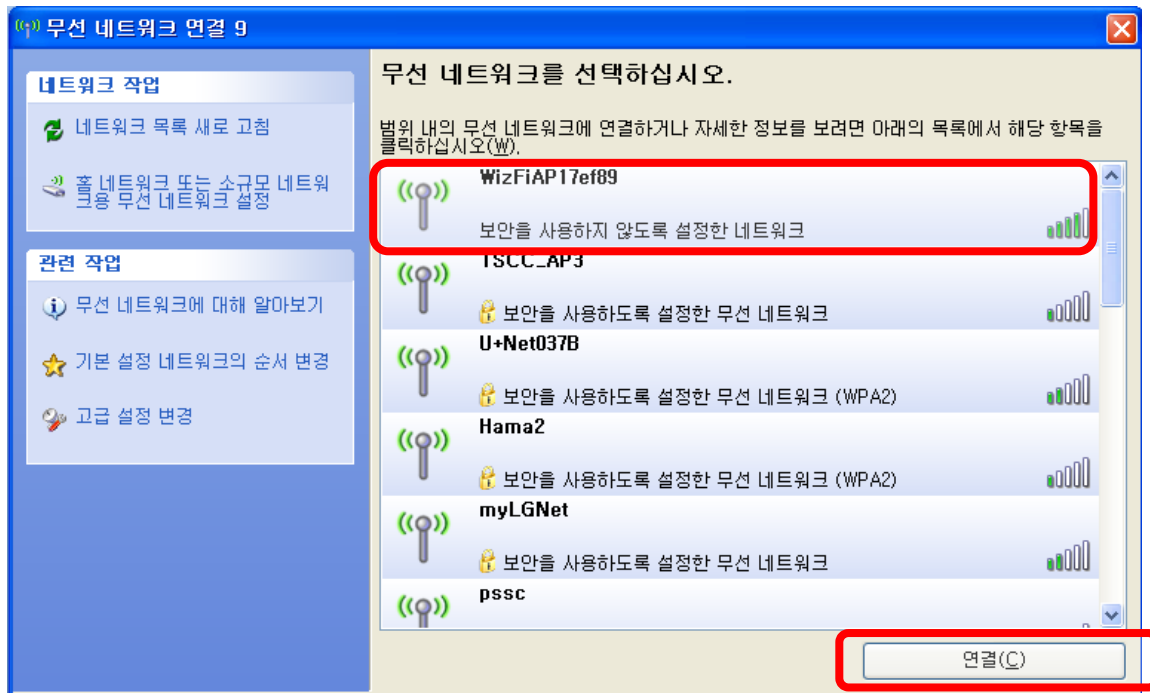
And the URL address of Wizfi210 is <<http://192.168.1.1>>

1.2 Connect to the WizFi210 (Limited AP)

If you scan the AP, you can see <WizFiAPXXXXXX> in the AP list.

<XXXXXX> is the MAC address of WizFi210.

Now, connect your PC to the WizFi210.



In Limited AP mode, WizFi210 have the DHCP server, so you don't need use the <static IP address>.

You can verify the IP address of your PC.

```

C:\>ipconfig

Windows IP Configuration

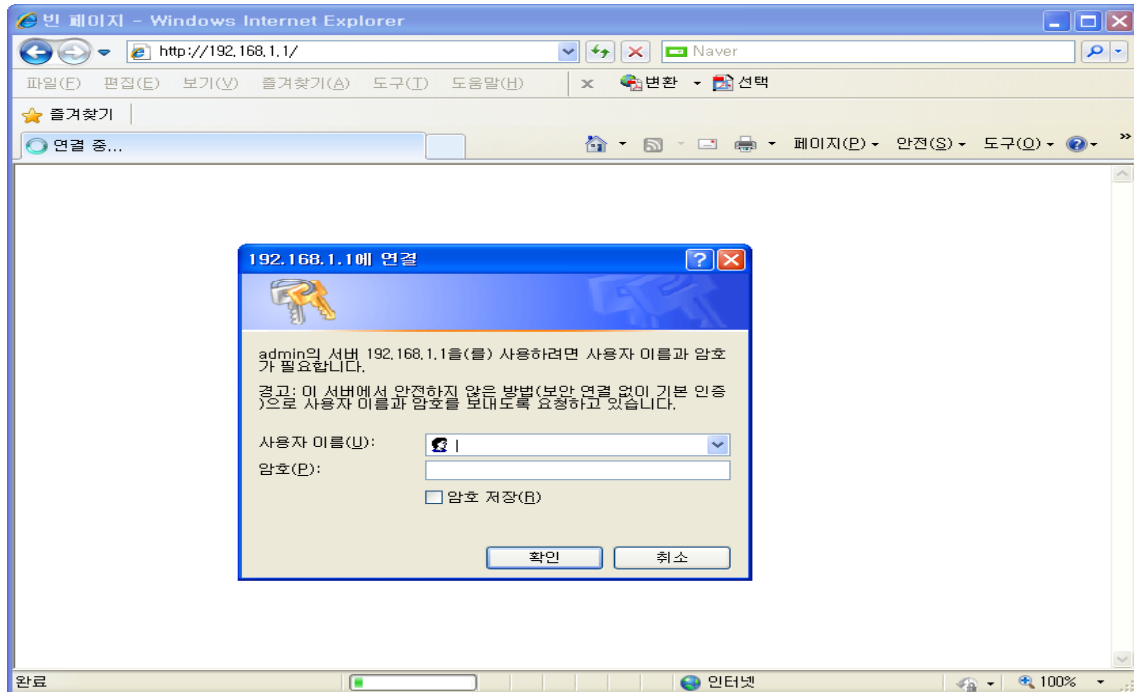
Ethernet adapter 무선 네트워크 연결 9:

    Connection-specific DNS Suffix  . : 
    IP Address. . . . . : 192.168.1.2
    Subnet Mask . . . . . : 255.255.255.0
    Default Gateway . . . . . : 
  
```

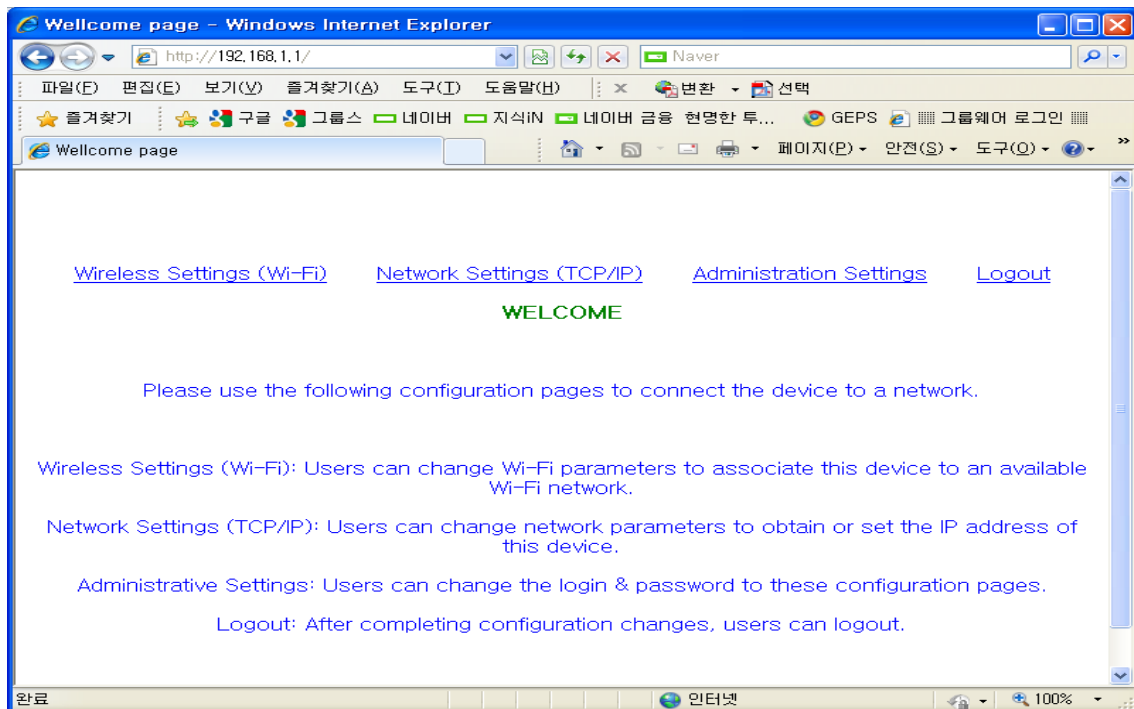
1.3 Connect to the Web server

Connect to the web server of WizFi210.

The default <ID/Password> is <admin/admin>.



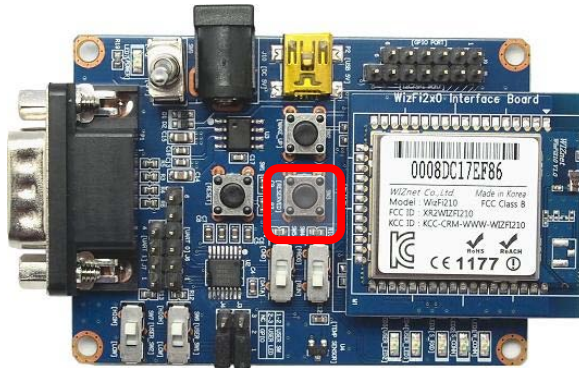
Now, you can configure the WizFi210 with web browser via WiFi.



2. ad hoc & Configuration-Tool Mode

2.1 Change mode to < ad hoc & Configuration-Tool mode>

If you click the <Reserved Button>(GPIO21 or GPIO10) button three times consecutively, the WizFi210 is restored to factory and changed ad hoc mode to configure the WizFi210 with <WiFi Configuration Tool>.



The IP address of WizFi210 is shown below.

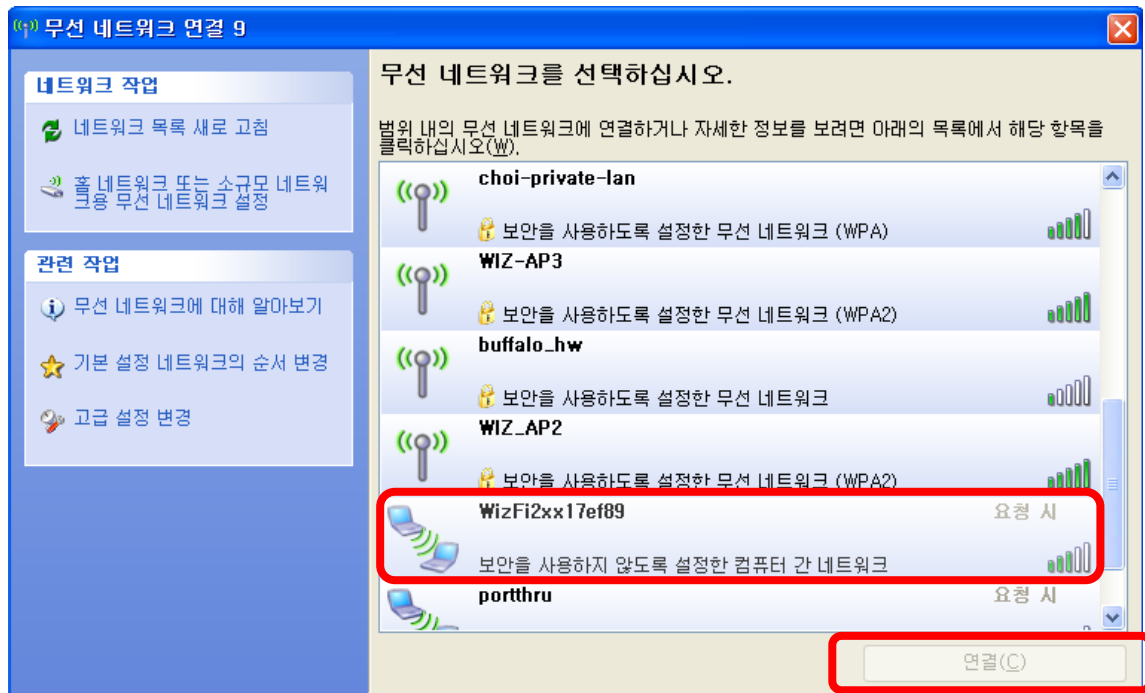
IP:192.168.1.254/Subnet:255.255.255.0/Gateway:192.168.1.1

2.2 Connect to the WizFi210 (ad hoc)

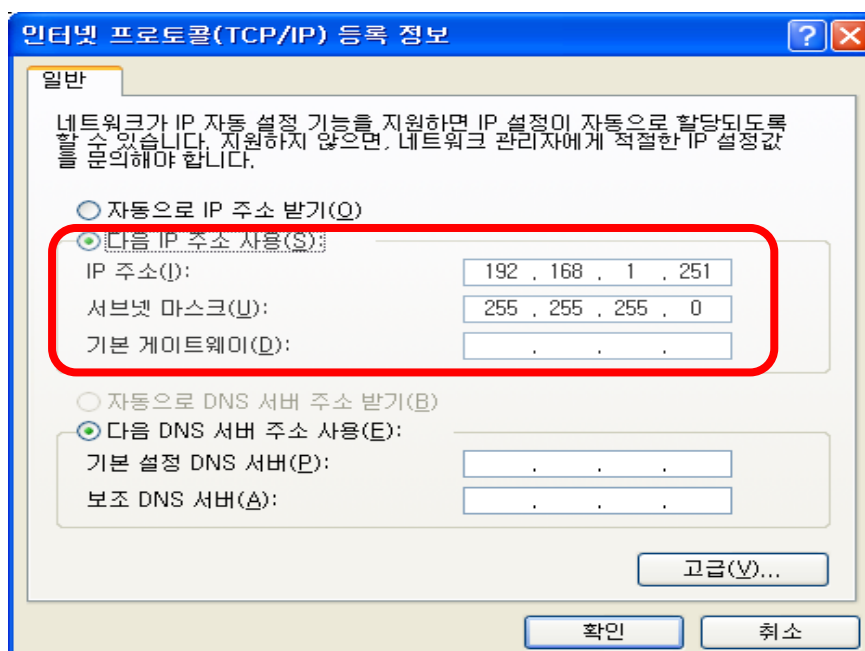
If you scan the AP, you can see <WizFi2xxXXXXXX> in the ad hoc list.

<XXXXXX> is the MAC address of WizFi210.

Now, connect your PC to the WizFi210.



In ad hoc mode, you need to use <Static IP address> as below.



And in most cases, you need to disable the ethernet adapter.

3.3 Using WizFi Configuration Tool

Now, you can use the <Wizfi Configuration Tool> via WiFi.

