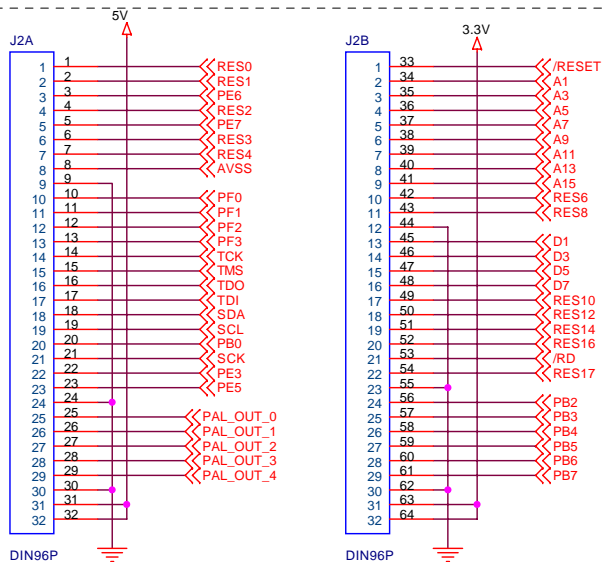
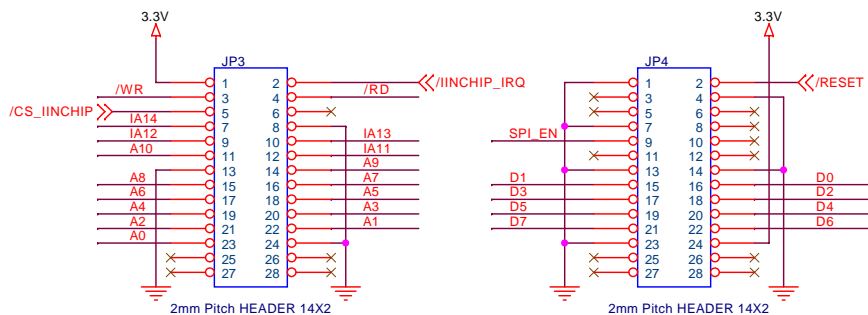


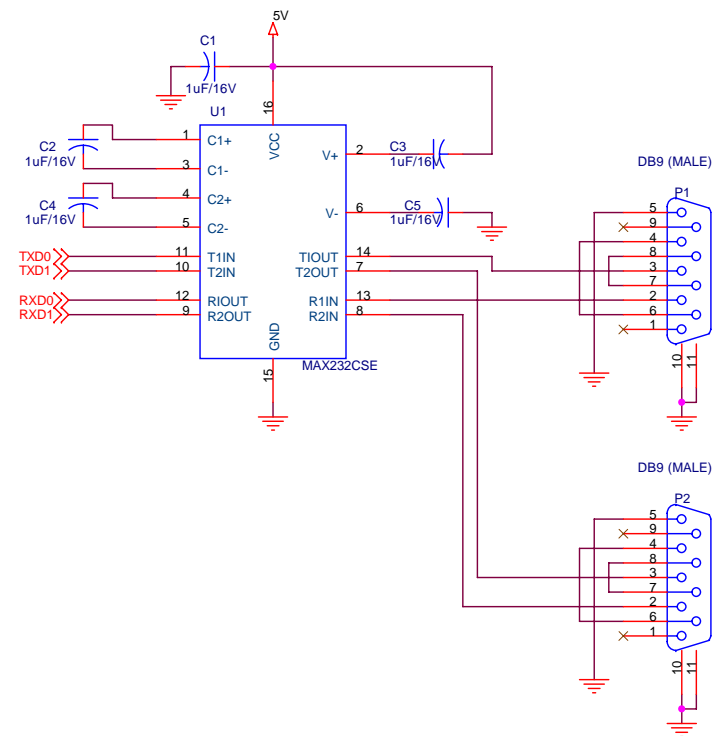
## Expanded Board Interface



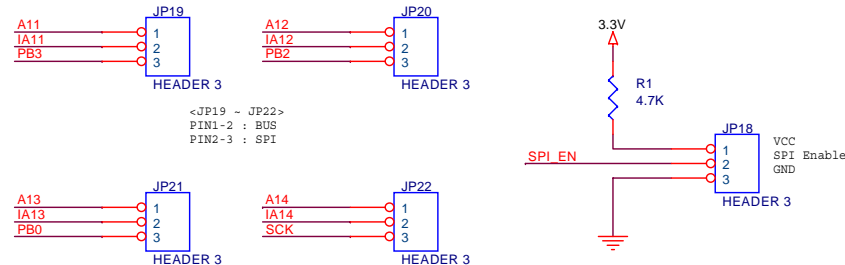
## NM7010B+ Interface



## RS232 2Port

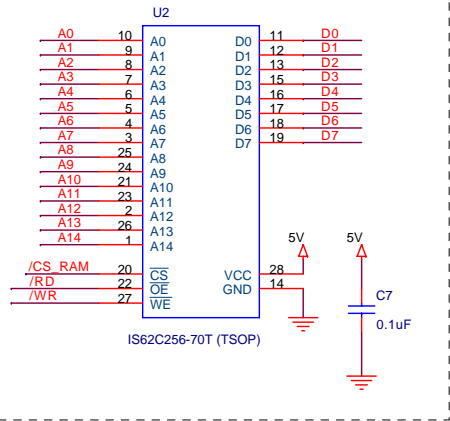


## SPI Interface

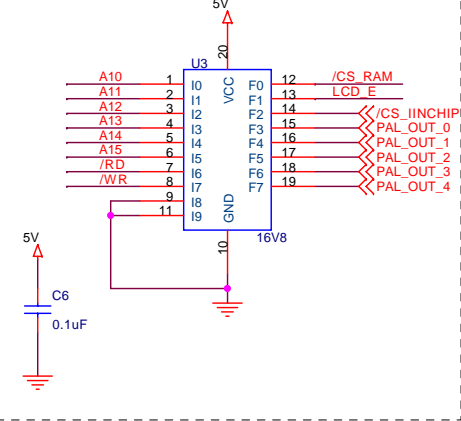


Title		
MB-EVB-X2		
Size	Document Number	Rev
B	<Doc>	1.0
Date: Friday, November 10, 2006		
Sheet 1 of 3		

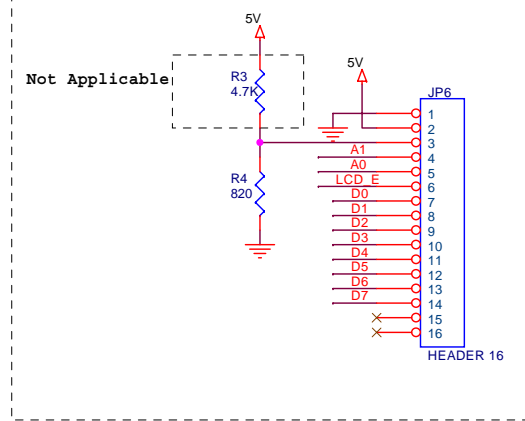
SRAM



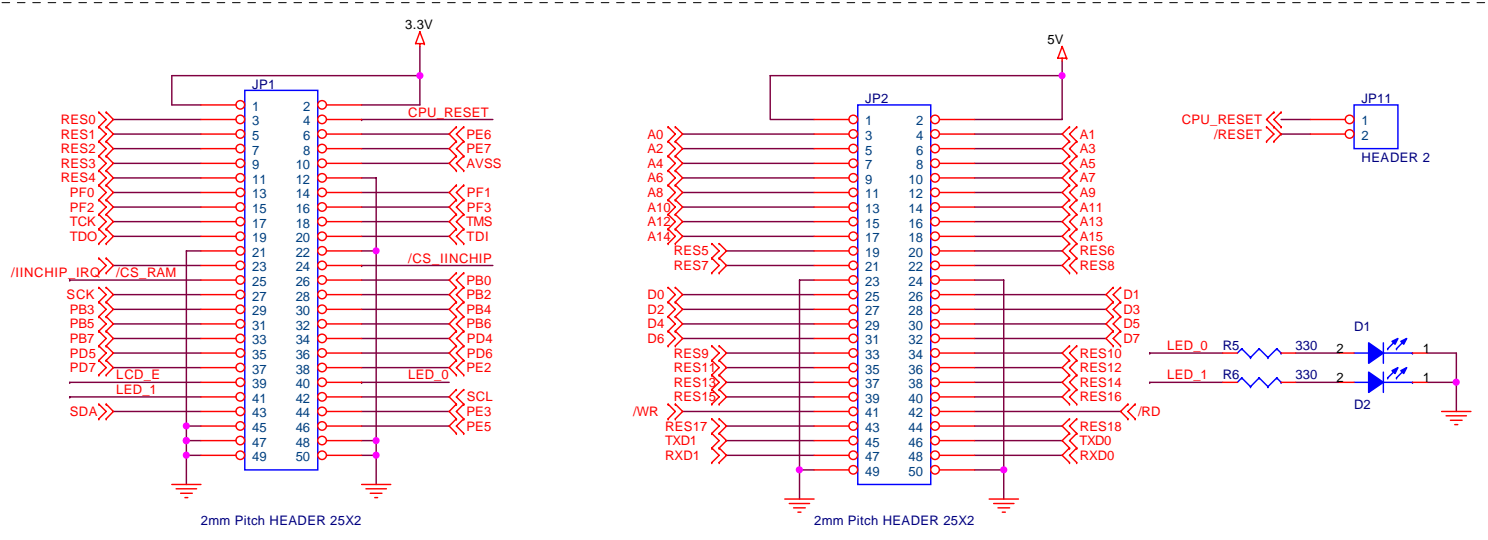
GAL



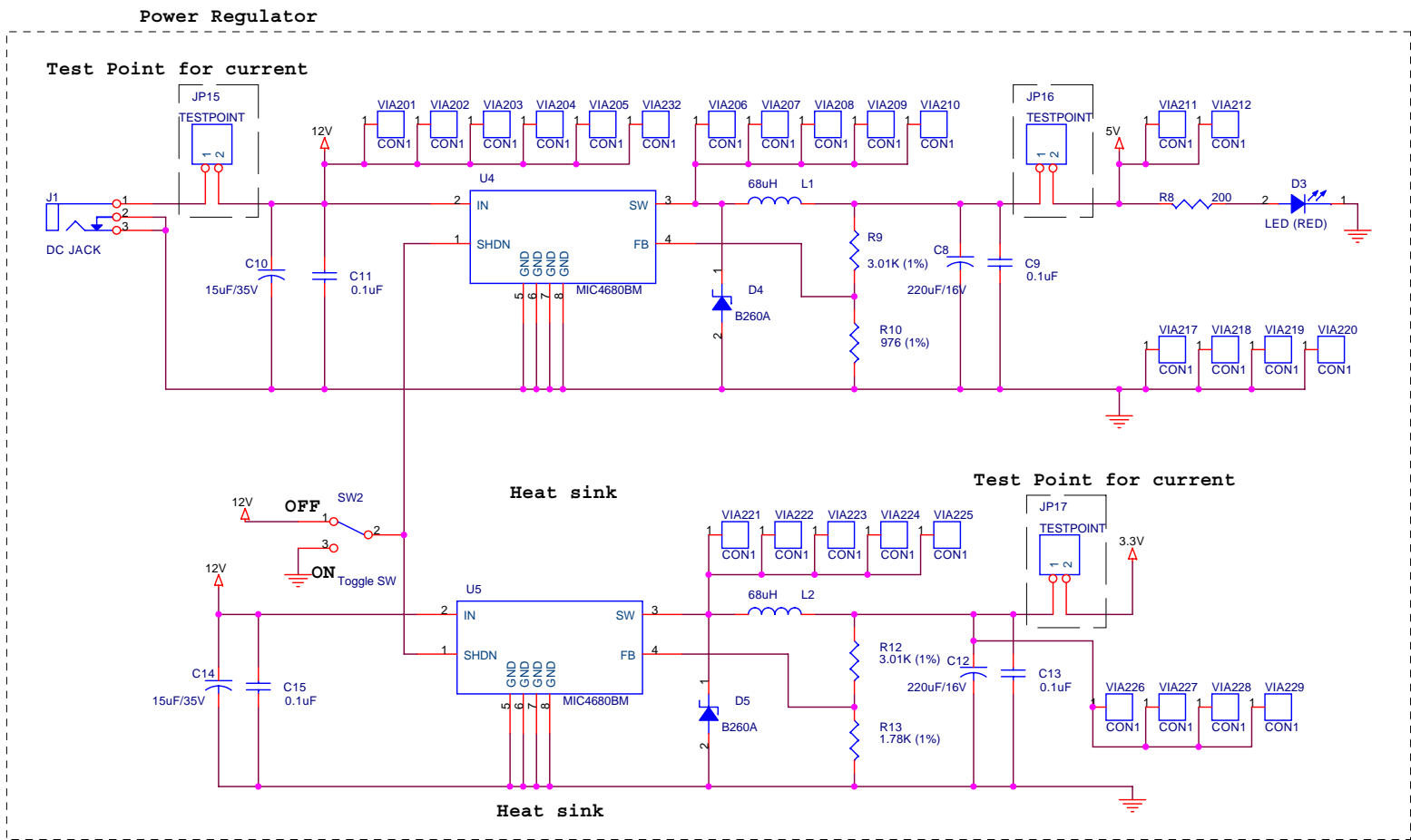
LCD



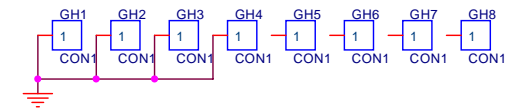
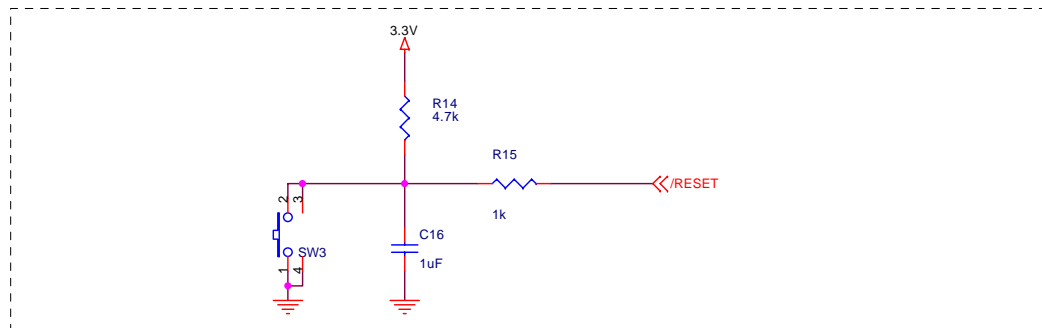
PM-A1 Module Interface



Title		
MB-EVB-X2		
Size	Document Number	Rev
B	<Doc>	1.0
Date:	Thursday, September 28, 2006	Sheet 2 of 3



### 3.3V Power On System Reset



Title		
MB-EVB-X2		
Size	Document Number	Rev
B	<Doc>	1.0
Date:	Thursday, September 28, 2006	Sheet 3 of 3