

WIZ127SR User's Manual

(Version 1.11)



©2013 WIZnet Co., Ltd. All Rights Reserved.

☞ For more information, visit our website at <http://www.wiznet.co.kr>

Document Revision History

Date	Revision	Changes
2013-04-01	V1.00	Official Release
2013-07-04	V1.10	Add default setting value (4.4) Add CTS/RTS timing diagram (4.5) Modify some miss types Update Pin-Description(2.1) Update EVB-Schematic(2.4.1)
2013-09-25	V1.11	Add sentence "RS232 Level"(4.5)

Information in this document is believed to be accurate and reliable. However, WIZnet does not give any representations or warranties, expressed or implied, as to the accuracy or completeness of such information and shall have no liability for the consequences of use of such information.

WIZnet reserves the right to make changes to information published in this document, including without limitation specifications and product descriptions, at any time and without notice. This document supersedes and replaces all information supplied prior to the publication hereof.

COPYRIGHT NOTICE

Copyright 2013 WIZnet Co., Ltd. All Rights Reserved.

Contact Information

- WIZnet US : sales_team@wiznettechnology.com / support_team@wiznettechnology.com
- WIZnet HK : sales@wiznet.hk
- WIZnet EU : sales@wiznet.eu
- WIZnet HQ : sales@wiznet.co.kr / support@wiznet.co.kr

For more information, visit our website at <http://www.wiznet.co.kr>

Table of Contents

1. INTRODUCTION.....	1
1.1. KEY FEATURE	1
2. HARDWARE SPECIFICATIONS.....	2
2.1. PIN ASSIGNMENT AND DESCRIPTION	2
2.2. DIMENSION	4
2.3. ELECTRICAL CHARACTERISTICS	5
2.3.1. Absolute Maximum Rating.....	5
2.3.2. DC Characteristics.....	5
2.3.3. POWER DISSIPATION.....	5
2.4. APPLICATION SCHEMATICS.....	6
2.4.1. WIZ127SR-BASE.....	6
2.4.2. RS485/422	7
3. PROGRAMMERS' GUIDE	8
3.1. SERIAL COMMANDS.....	8
3.1.1. Serial Command Format.....	8
3.1.2. Reply Code	8
3.1.3. Command Code.....	8
3.2. DATA MODE AND COMMAND MODE	17
3.2.1. Data mode.....	17
3.2.2. Serial Command mode	17
3.2.3. How to switch the mode.....	17
3.2.4. How to configure WIZ127SR with a whole data.....	17
3.2.4.1. Command Frame Format	18
3.2.4.2. Reply Frame Format.....	19
3.2.4.3. Example.....	20
3.3. HOW TO GET THE SOCKET STATUS	21
3.4. HOW TO USE EXTRA GPIO PINS	21
4. HOW TO CONFIGURE WIZ127SR.....	22
4.1. CONFIGURING WITH UDP BROADCASTING AND WIZ127SR CONFIGURATION TOOL.....	22
4.1.1. Network Configurations.....	22
4.1.2. Serial Configuration	25
4.1.3. Option Configuration.....	29
4.2. CONFIGURING WITH WEB BROWSER.....	31
4.3. CONFIGURING WITH TELNET	32
4.4. FACTORY DEFAULT VALUES OF WIZ127SR	34
4.5. HARDWARE FLOW CONTROL DIAGRAM (RS232 LEVEL)	36
4.5.1. CTS/RTS Mode Timing Diagram.....	36
4.5.2. DTR/DSR mode Timing Diagram	37
4.5.3. RTS Only mode Timing Diagram.....	38
5. HOW TO UPLOAD A NEW FIRMWARE	39
6. QUICK INSTALLATION AND TEST	42
6.1. SYSTEM CONFIGURATION	42
6.2. TESTING PROCEDURE	42
6.2.1. Hardware Connection.....	42
6.2.2. Module Configuration	42
7. WARRANTY	47

Figures

FIGURE 1 PIN ASSIGNMENT	2
FIGURE 2 DIMENSION.....	4
FIGURE 3 WIZ127SR BASE BOARD SCHEMATIC.....	6
FIGURE 4 REFERENCE SCHEMATIC FOR INTERFACING TO RS485/422	7
FIGURE 5. CONFIGURATION TOOL (NETWORK CONFIGURATION)	22
FIGURE 6. CONFIGURATION TOOL (SERIAL CONFIGURATION)	25
FIGURE 7. CONFIGURATION TOOL (OPTION CONFIGURATION)	29
FIGURE 8. CTS SIGNAL TIMING DIAGRAM UNDER CTS/RTS MODE.....	36
FIGURE 9. RTS SIGNAL TIMING DIAGRAM UNDER CTS/RTS MODE.....	36
FIGURE 10. DTR SIGNAL TIMING DIAGRAM UNDER DSR/DTR MODE.....	37
FIGURE 11. DSR SIGNAL TIMING DIAGRAM UNDER DSR/DTR MODE.....	37
FIGURE 12. RTS SIGNAL TIMING DIAGRAM UNDER RTS ONLY MODE	38
FIGURE 13. CONFIGURATION TOOL	39
FIGURE 14. OPEN DIALOG BOX FOR UPLOADING.....	40
FIGURE 15. FIRMWARE UPLOADING WINDOW	41
FIGURE 16. COMPLETE UPLOADING.....	41

Tables

TABLE 1 PIN DESCRIPTION.....	3
TABLE 2 ABSOLUTE MAXIMUM RATING	5
TABLE 3 DC CHARACTERISTIC	5
TABLE 4 POWER DISSIPATION.....	5
TABLE 5. SERIAL CONFIGURATION FRAME FORMAT	8
TABLE 6. SERIAL CONFIGURATION REPLY FRAME FORMAT.....	8
TABLE 7. SERIAL CONFIGURATION STX & ETX	8
TABLE 8. SERIAL CONFIGURATION REPLY CODE.....	8
TABLE 9. HARDWARE CONFIGURATION FRAME FORMAT	18
TABLE 10. HARDWARE CONFIGURATION COMMAND CODE.....	18
TABLE 11. HARDWARE CONFIGURATION PARAMETER DESCRIPTIONS	19
TABLE 12. HARDWARE CONFIGURATION REPLY FRAME FORMAT	19
TABLE 13. HARDWARE CONFIGURATION ENTRANCE MESSAGE	20

1. Introduction

WIZ127SR is a 2 ports gateway module that converts RS-232 protocol into TCP/IP protocol. This module enables remote gauging, remote management of the device through the network based on the Ethernet and the TCP/IP by connecting to existing equipment with RS-232 serial interface. In other words, WIZ127SR is a protocol converter that transmits the data sent by serial equipment as TCP/IP data type or vice versa.

1.1. Key Feature

- Plug & Play Type Serial to Ethernet Gateway module
 - Adds Network Function Simply and Quickly
 - Provides Firmware Customization
- Hardware compatible with WIZ100SR
- 2port serial to Ethernet
 - supports RS-232
 - supports RS-422/485 by adding RS-232 to RS-422/485 converter
- Supports TCP & UDP communication
- Supports DHCP, DNS, NTP
- Easy configuration
 - Web, Telnet, Configuration Tool & Serial Command
- GPIO Extendable (Max. 10GPIOs), by firmware customization
- 10/100 Ethernet & Max.921,600bps Serial Interface
- Supports Static IP, DHCP, PPPoE
- Supports DNS function
- RoHS compliant

2. Hardware Specifications

2.1. Pin Assignment and Description

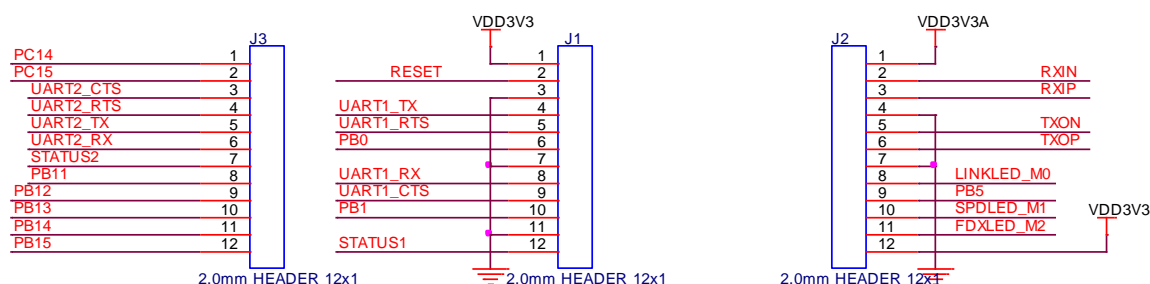


Figure 1 Pin Assignment

Pin Location	Pin name	Description	I/O	Attribute
J1.1	VDD3V3	3.3V Power Supply		
J1.2	RESET	Reset (Active High)	Input	-
J1.3	GND	Ground		
J1.4	UART1_TX	TX Data Output for UART1 We recommend to add external pull-up resistor on UART1_TX.	Output	
J1.5	UART1_RTS	Request To Send for UART1	Output	
J1.6	PB0	GPIO pin	Input/Output	CMOS/TTL/5V tolerant Input
J1.7	GND	Ground		
J1.8	UART1_RX	RX Data Input for UART1	Input	
J1.9	UART1_CTS	Clear To Send for UART1	Input	
J1.10	PB1	GPIO pin	Input/Output	CMOS/TTL/5V tolerant Input
J1.11	GND	Ground		
J1.12	(*) STATUS1	High: Not connected Low: Connected	Input/Output	CMOS/TTL/5V tolerant Input WIZ127SR check whether this pin is asserted low as input pin during booting. If it is low, WIZ127SR enter into Hardware configuration mode. Otherwise, It enters into normal mode
J2.1	VDD3V3A	Analog 3.3V Output		
J2.2	RXIN	Ethernet Differential Input-	Input	-
J2.3	RXIP	Ethernet Differential Input+	Input	-
J2.4	GND	Ground		
J2.5	TXON	Ethernet Differential Output-	Output	-
J2.6	TXOP	Ethernet Differential Output+	Output	-
J2.7	GND	Ground		
J2.8	LINKLED_M0	Ethernet Link LED	Output	-
J2.9	PB5	GPIO pin	Input/Output	CMOS/TTL/5V tolerant Input

J2.10	SPDLED_M1	Ethernet Speed LED	Output	-
J2.11	FDXLED_M2	Ethernet Full-duplex LED	Output	-
J2.12	VDD3V3	3.3V Power Supply		
J3.1	PC14		Input/Output	CMOS/TTL/5V tolerant Input
J3.2	PC15		Input/Output	CMOS/TTL/5V tolerant Input
J3.3	UART2_CTS	Clear To Send for UART2	Input	CMOS/TTL/5V tolerant Input
J3.4	UART2_RTS	Request To Send for UART2	Output	CMOS/TTL/5V tolerant Input
J3.5	UART2_TX	TX Data Output for UART2 We recommend to add external pull-up resistor on UART2_TX.	Output	CMOS/TTL/5V tolerant Input
J3.6	UART2_RX	RX Data Input for UART2	Input	CMOS/TTL/5V tolerant Input
J3.7	STATUS2	High: Not connected Low: Connected	Output	CMOS/TTL/5V tolerant Input
J3.8	PB11	Factory Reset (Active Low)	Input	CMOS/TTL/5V tolerant Input Factory Reset is done if it is asserted low during MCU booting.
J3.9	PB12	GPIO pin	Input/Output	CMOS/TTL/5V tolerant Input
J3.10	PB13	GPIO pin	Input/Output	CMOS/TTL/5V tolerant Input
J3.11	PB14	GPIO pin	Input/Output	CMOS/TTL/5V tolerant Input
J3.12	PB15	GPIO pin	Input/Output	CMOS/TTL/5V tolerant Input

(*) This pin can be used for H/W Trigger (Active Low).

Table 1 Pin Description

2.2. Dimension

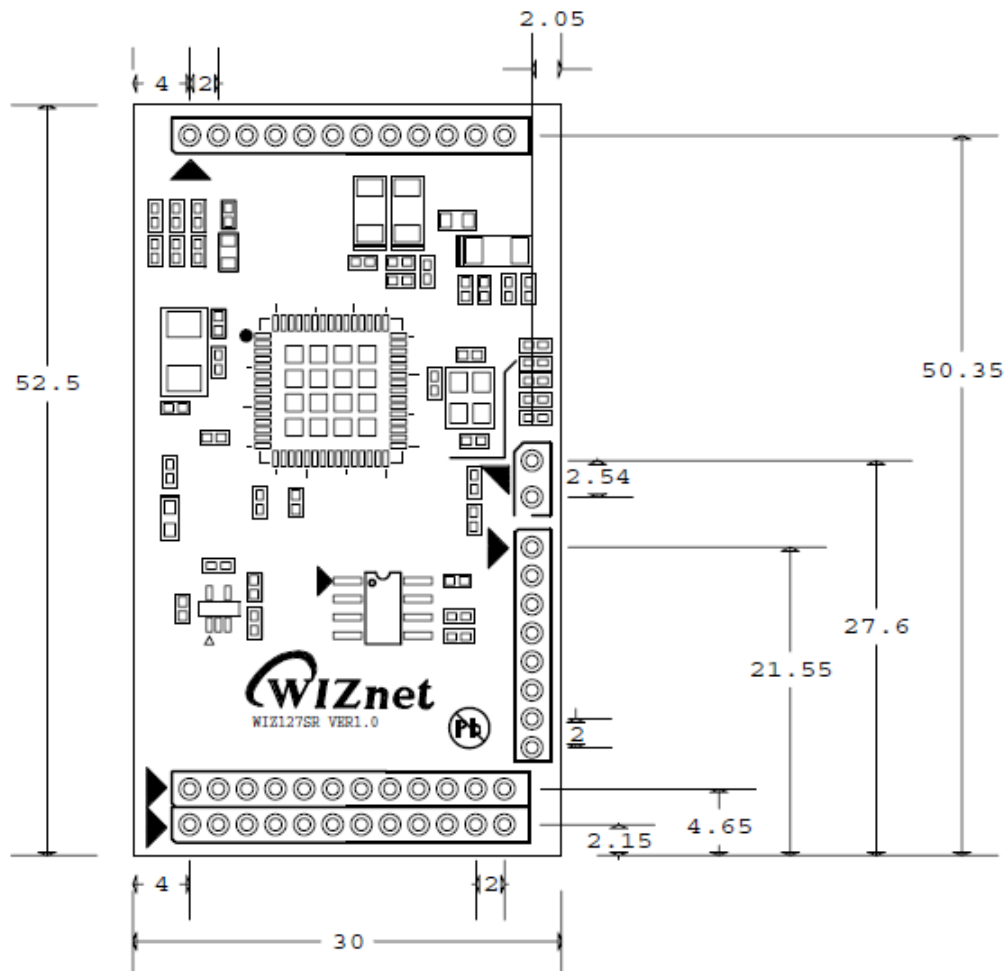


Figure 2 Dimension

2.3. Electrical Characteristics

2.3.1. Absolute Maximum Rating

Symbol	Parameter	Rating	Unit
V _{DD}	DC Supply voltage	-0.5 to 3.63	V
V _{IN}	DC Input voltage	-0.5 to 3.63	V
I _{IN}	DC Input current	5	mA
T _{OP}	Operating temperature	0 to 70	°C
T _{STG}	Storage temperature	TBD	°C

Table 2 Absolute Maximum Rating

2.3.2. DC Characteristics

Symbol	Parameter	Test Conditon	Min	Typ	Max	Unit
V _{DD}	DC Supply voltage	Junction temperature is from -55°C to 125°C	2.97		3.6	V
V _{IH}	High level input voltage		2.0		3.6	V
V _{IL}	Low level input voltage		0.3		0.8	V
V _{OH}	High level output voltage		2.4			V
V _{OL}	Low level output voltage				0.4	V
I _I	Input Current	V _{IN} = V _{DD}			5	μA

Table 3 DC Characteristic

2.3.3. POWER DISSIPATION

Test Condition(VCC3.3V, Temperature 25°C)

Condition	Min	Typ	Max	Unit
100M Link	-	200	215	mA
10M Link	-	147	162	mA
Loss Link	-	158	173	mA
100M Transmitting	-	200	215	mA
10M Transmitting	-	147	162	mA

Table 4 Power Dissipation

2.4. Application Schematics

2.4.1. WIZ127SR-BASE

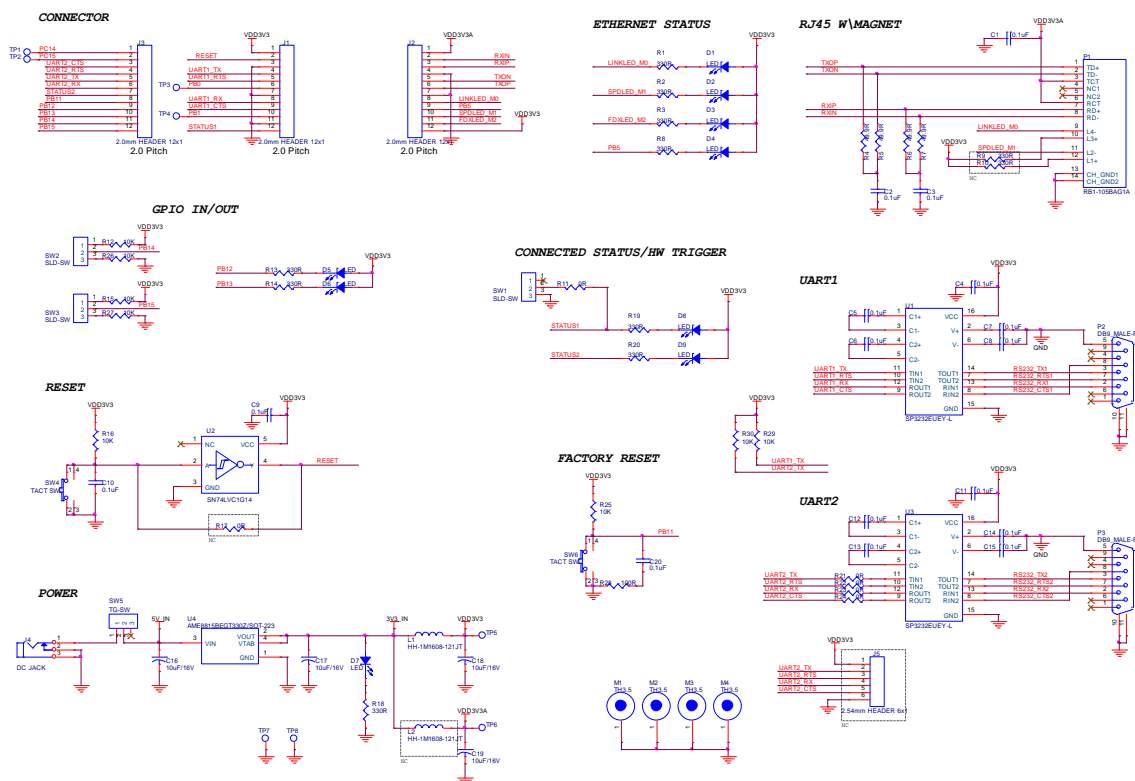


Figure 3 WIZ127SR Base board schematic

2.4.2. RS485/422

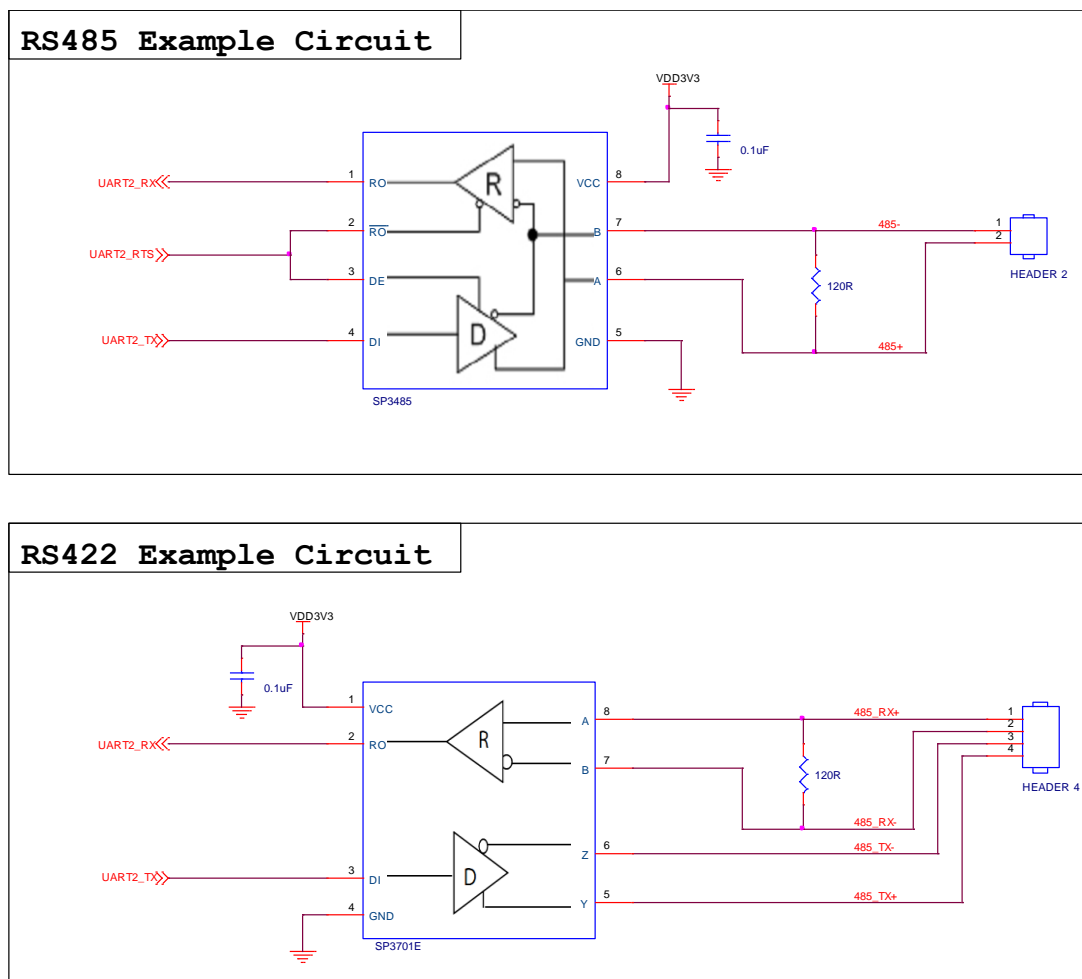


Figure 4 Reference schematic for interfacing to RS485/422

3. Programmers' Guide

3.1. Serial Commands

3.1.1. Serial Command Format

It is possible to configure WIZ127SR by using serial command. By inputting specified 3 characters you can enter into the configuration mode. The characters can be defined at the Configuration Tool.

< Frame Format >

Command Frame format

Descriptor Length(bytes)	STX	Command code	Parameter	ETX
	1	2	Variable	1

Table 5. Serial Configuration Frame format

Reply Frame format

Descriptor Length(bytes)	STX	Reply code	Parameter	ETX
	1	1	Variable	1

Table 6. Serial Configuration Reply Frame format

STX & ETX

Setting	Comments
STX	'<' : Hex = 3Ch
ETX	'>' : Hex = 3Eh

Table 7. Serial Configuration STX & ETX

3.1.2. Reply Code

Reply	Comments
S	Command was successful
F	Command failed
0	Invalid STX
1	Invalid command
2	Invalid parameter
3	Invalid ETX
E	Enter Serial Command Mode

Table 8. Serial Configuration Reply Code

3.1.3. Command Code

Command	Category	Description
WI	Format	<WIxxx.xxx.xxx.xxx>
	Meaning	Set Local IP ex) <WI192.168.11.133>
	Response	<S>
RI	Format	<RI>

	Meaning	Get the current WIZ127SR's Local IP address Its response format is like below. <S[IP Addr]> [IP Addr] : Server's IP address in a dotted decimal format ex) <RI>	
	Response	<S192.168.0.100>	
WS	Format	<WSxxx.xxx.xxx.xxx>	
	Meaning	Set Subnet Mark ex) <WS255.255.255.0>	
	Response	<S>	
RS	Format	<RS>	
	Meaning	Get the current WIZ127SR's Subnet Mask Its response format is like below. <S[Subnet]> [Subnet] : Server's IP address in a dotted decimal format ex) <RS>	
	Response	<S255.255.255.0>	
WG	Format	<WGxxx.xxx.xxx.xxx>	
	Meaning	Set Gateway Address ex) <WG192.168.11.1>	
	Response	<S>	
RG	Format	<RG>	
	Meaning	Get the current WIZ127SR's Gateway address Its response format is like below. <S[IP Addr]> [IP Addr] : Server's IP address in a dotted decimal format ex) <RG>	
	Response	<S192.168.0.1>	
WP	Format	<WPxxxxx>	
	Meaning	Set Local port number ex) <WP35000>	
	Response	<S>	
RP	Format	<RP>	
	Meaning	Get the current WIZ127SR's Local port number Its response format is like below. <S[Port]> [Port] : Server's IP address in a dotted decimal format ex) <RP>	
	Response		
WD	Format	<WDx>	
	Meaning	Set the method of setting WIZ127SR's IP address	
		Parameter's Value	Meaning

		<table><tr><td>0</td><td>Static mode</td></tr><tr><td>1</td><td>DHCP mode</td></tr><tr><td>2</td><td>PPPoE mode</td></tr></table>	0	Static mode	1	DHCP mode	2	PPPoE mode						
	0	Static mode												
	1	DHCP mode												
2	PPPoE mode													
		ex) <WD0> or <WD1>												
	Response	<S>												
RD	Format	<RD>												
	Meaning	Get the current WIZ127SR's method setting its IP address Its response format is like below. <S[Mode]> [Mode] : Server's IP address in a dotted decimal format ex) <RD>												
	Response													
WM	Format	<WMx>												
	Meaning	Set the operation mode of a TCP socket <table><tr><th>Parameter's Value</th><th>Meaning</th><th>Remarks</th></tr><tr><td>0</td><td>TCP Client</td><td>The TCP socket try to connect to the peer until the connection is established</td></tr><tr><td>1</td><td>TCP Mixed</td><td>This mode is the same to TCP Server mode at first, but While any connection is not established, if WIZ127SR get any data via UART then WIZ127SR make TCP socket be a TCP Client socket and try to connect to the specified peer system.</td></tr><tr><td>2</td><td>TCP Server</td><td>The TCP socket is in Listen mode waiting for a request of connection from any peer system.</td></tr></table> ex) <WM0>	Parameter's Value	Meaning	Remarks	0	TCP Client	The TCP socket try to connect to the peer until the connection is established	1	TCP Mixed	This mode is the same to TCP Server mode at first, but While any connection is not established, if WIZ127SR get any data via UART then WIZ127SR make TCP socket be a TCP Client socket and try to connect to the specified peer system.	2	TCP Server	The TCP socket is in Listen mode waiting for a request of connection from any peer system.
	Parameter's Value	Meaning	Remarks											
0	TCP Client	The TCP socket try to connect to the peer until the connection is established												
1	TCP Mixed	This mode is the same to TCP Server mode at first, but While any connection is not established, if WIZ127SR get any data via UART then WIZ127SR make TCP socket be a TCP Client socket and try to connect to the specified peer system.												
2	TCP Server	The TCP socket is in Listen mode waiting for a request of connection from any peer system.												
Response	<S>													
RM	Format	<RM>												
	Meaning	Get the current data communication socket's operation mode Its response format is like below. <S[Mode]> [Mode] : Server's IP address in a dotted decimal format ex) <RM>												
	Response													
WK	Format	<WKx>												
	Meaning	Set the protocol of the communication socket with one of two mode. <table><tr><th>Parameter's Value</th><th>Meaning</th></tr><tr><td>0</td><td>TCP</td></tr><tr><td>1</td><td>UDP</td></tr></table> ex) <WK0>	Parameter's Value	Meaning	0	TCP	1	UDP						
	Parameter's Value	Meaning												
0	TCP													
1	UDP													
Response	<S>													
RK	Format	<RK>												

	Meaning	Get the current data communication socket's protocol type. Its response format is like below. <S[Protocol]> [Protocol] : Server's IP address in a dotted decimal format ex) <RK>		
	Response			
WB	Format	<WB[b][d][p][f]>		
	Meaning	Configure UART with four parameters [b], [d], [p] and [f] are a byte parameters, and those have the meaning as below		
		Parameter	Value	Meaning
		[b] : baud rate	c	921,600 bps
			b	460,800 bps
			a	230,400 bps
			1	115,200 bps
			2	57,600 bps
			3	38,400 bps
	4		19,200 bps	
5	9,600 bps			
[d] : data bits size	6	4,800 bps		
	7	2,400 bps		
	8	1,200 bps		
[p] : parity	0	No Parity		
	1	Odd Parity		
	2	Even Parity		
[f] : flow control	0	None		
	2	RTS/CTS		
	3	DSR/DTR		
	4	RTS Only (For RS485)		
	ex) <WB1800> => 115200, 8 bits, no parity, no flow control			
Response	<S>			
RB	Format	<RB>		
	Meaning	Get the current configuration information of WIZ127SR's serial interface. Its response format is like below. <S[baud rate][data size][parity][flow control]> ex) <RB>		
	Response	<S1800>		
WT	Format	<WT[y]>		
	Meaning	Set whether serial command will be allowed, or not [y] = 0 : Disable [y] = 1 : Enable ex) <WT1>		
	Response	<S>		
RT	Format	<RT>		
	Meaning	Get the current setting of serial command method		

		<p>Its response format is like below.</p> <p><S[Option]></p> <p>[Option] : Server's IP address in a dotted decimal format</p> <p>ex) <RT></p>
	Response	<S1>
WU	Format	<WU[y]>
	Meaning	<p>Set Whether DNS service will be allowed</p> <p>[y] = 0 : Not use [y] = 1 : Use</p> <p>ex) <WU1></p>
	Response	<S>
RU	Format	<RU>
	Meaning	<p>Get whether DNS mode is enabled or not</p> <p>Its response format is like below.</p> <p><S[flag]></p> <p>[flag] : 0 = Not Use, 1 = Use</p> <p>ex) <RU></p>
	Response	<S 1>
WE	Format	<WE[ch][ch][ch]>
	Meaning	<p>Set character string using for Software trigger in order to enter serial command mode.</p> <p>[ch] is a ASCII character represented in its hexadecimal format. For example, if user wants use 'A' as [ch] then user should input its ASCII code in hexadecimal format, '4' and '1', not 'A'.</p> <p>ex) If character string for software trigger is "+++" then <WE2B2B2B></p>
	Response	<S>
RE	Format	<RE>
	Meaning	<p>Get the current character string for software trigger to enter the serial command mode.</p> <p>Its response format is like below.</p> <p><S[ch1][ch2][ch3]></p> <p>[IP Addr] : Server's IP address in a dotted decimal format</p> <p>ex) <RE></p>
	Response	<S2B2B2B>
WX	Format	<WX[IP Addr]>
	Meaning	<p>Set Server's IP address to connect when the data socket is defined as Client mode or Mixed mode. If user defined the data socket as a Server mode, WIZ127SR don't care this Server's IP address.</p> <p>[IP Addr] : Server's IP address in a dotted decimal format</p> <p>ex) <WX192.168.11.144></p>
	Response	<S>
RX	Format	<RX>
	Meaning	Get the current Server's IP address

		<p>Its response format is like below.</p> <p><S[IP Addr]></p> <p>[IP Addr] : Server's IP address in a dotted decimal format</p> <p>ex) <RX></p>
	Response	<S192.168.0.115>
WN	Format	<WN[port]>
	Meaning	<p>Set Server's port number to connect when the data socket is defined as Client mode or Mixed mode.</p> <p>[port] : Server's port number in a decimal format. Its range is 0 to 65535</p> <p>ex) <WN5000></p>
	Response	<S>
RN	Format	<RN>
	Meaning	<p>Get the current Server's Port number</p> <p>Its response format is like below.</p> <p><S[Port number]></p> <p>[IP Addr] : Server's IP address in a dotted decimal format</p> <p>ex) <RN></p>
	Response	<S5000>
WR	Format	<WR>
	Meaning	<p>Restart WIZ127SR</p> <p>Some commands need reboot of WIZ127SR in order that those command affect to WIZ127SR's configuration to operate properly. So, we recommend you do use this command after all command you issued, to guarantee WIZ127SR operate successfully.</p> <p>ex) <WR></p>
	Response	<S>
WV	Format	<WV[IP addr]>
	Meaning	<p>Set Domain Name Server's IP address</p> <p>If you want to use Server information in Domain name, not IP address, then you should set Domain Name Server's IP address using this command. And the Domain Name Server's IP address which you entered should be valid and operate DNS query successfully.</p> <p>[IP Addr] : Server's IP address in a dotted decimal format</p> <p><WV8.8.8.8></p>
	Response	<S>
RV	Format	<RV>
	Meaning	<p>Get the current Domain Name Server IP address</p> <p>Its response format is like below.</p> <p><S[IP Addr]></p> <p>[IP Addr] : Server's IP address in a dotted decimal format</p> <p>ex) <RV></p>
	Response	<S8.8.8.8>
WW	Format	<WW[Domain name]>

	Meaning	<p>Set Domain Name which you connect to. This information is meaningful as if you want use the data socket as Client mode or Mixed mode and set DNS enabled and set a proper DNS IP address. If one of them isn't set properly, despite you use this command, you can't get a good response.</p> <p>[Domain name] : Domain name in string type</p> <p>ex) <WWWwww.google.com></p>
	Response	<S>
RW	Format	<RW>
	Meaning	<p>Get the current Domain Name set in WIZ127SR Its response format is like below <S[Domain Name]></p> <p>[Domain Name]</p>
	Response	<Swww.wiznet.co.kr>
WY	Format	<WY[ID]>
	Meaning	Set ID for PPPoE authentication
	Response	<S>
RY	Format	<RY>
	Meaning	<p>Get the current ID for PPPoE Its response format is like below <S[ID]></p> <p>[ID] :</p>
	Response	<Sadmin>
WZ	Format	<WZ[Passwd]>
	Meaning	Set Password for PPPoE authentication
	Response	<S>
RZ	Format	<RZ>
	Meaning	<p>Get the current password for PPPoE Its response format is like below. <S[Passwd]></p> <p>[Passwd] : Server's IP address in a dotted decimal format</p> <p>ex) <RZ></p>
	Response	<Sadmin>
OC	Format	<OC[ch]>
	Meaning	<p>Set a character delimiter¹ for making a ethernet data block in Hexadecimal format.</p> <p>[ch] : character information. Default value is 00. If this value is 00, it means Character Delimiter disabled</p>

¹ In normal, a serial device send data in chunk. Some device never expects those data chunk would be divided more than two pieces. But WIZ127SR handle data from serial interface byte by byte, in other word WIZ127SR check its serial buffer having data from serial interface and there are some data in that buffer, then it make a ethernet packet with those data and send that. But because the peer system expects all data chunk, that consider those data was broken and discard those.

So, to avoid this fault, WIZ127SR provides three scheme to handle serial data chunk by chunk. Those are character delimiter, size delimiter and time delimiter.

		ex) <OC1B>
	Response	<S>
QC	Format	<QC>
	Meaning	<p>Get the current character delimiter Its response format is like below. <S[ch]></p> <p>[ch] : Server's IP address in a dotted decimal format</p> <p>ex) <QC></p>
	Response	<S41>
OS	Format	<OS[size]>
	Meaning	<p>Set a size delimiter for making a ethernet data block in Decimal format</p> <p>[size] : size information. Its range is 0 ~ 255. Default value is 0. If this value is 0, it means Size Delimiter Disabled</p> <p>ex) <OS100></p>
	Response	<S>
QS	Format	<QS>
	Meaning	<p>Get the current size delimiter value Its response format is like below. <S[size]></p> <p>[size] : Server's IP address in a dotted decimal format</p> <p>ex) <QS></p>
	Response	<S40>
OT	Format	<OT[time]>
	Meaning	<p>Set a time delimiter for making a ethernet data block in Decimal format</p> <p>[time] : time information. Its range is 0 ~ 65535. Unit is millisecond. Default value is 0. If this value is 0, it means Time Delimiter disabled</p> <p>ex) <OT100></p>
	Response	<S>
QT	Format	<QT>
	Meaning	<p>Get the current time delimiter value Its response format is like below. <S[time]></p> <p>[time] : Server's IP address in a dotted decimal format</p> <p>ex) <QT></p>
	Response	<S100>
OI	Format	<OI[time]>

	Meaning	<p>Set the inactivity time² for disconnecting the current established socket, as data communication is idle for some time which users already set</p> <p>[time] : time information. Its range is 0 ~65535. Unit is second. Default value is 0. If this value is 0, it means Inactivity Time disabled</p>
	Response	<S>
QI	Format	<QI>
	Meaning	<p>Get the current inactivity time value Its response format is like below. <S[time]></p> <p>[time] : Server's IP address in a dotted decimal format</p> <p>ex) <QI></p>
	Response	<S60>
RA	Format	<RA>
	Meaning	<p>Get the current MAC address of WIZ127SR Its response has a format like below. <S[MAC Addr]></p> <p>[MAC addr] : This is 6 ASCII String in a Hexadecimal format with delimiters, ':', following to every 2 characters.</p> <p>ex) <RA></p>
	Response	<S00:08:DC:00:11:22>
RF	Format	<RF>
	Meaning	<p>Get the current firmware version stored in WIZ127SR. Its response format is like below. <S[Ver]></p> <p>[Ver] : Server's IP address in a dotted decimal format</p> <p>ex) <RF></p>
	Response	<S3.1>

² WIZ127SR itself doesn't disconnect a TCP connection after a connection established. Normally the peer system do that. But, there are many cases that users' system including WIZ127SR should close a established connection after a short data communication and any peer system of WIZ127SR doesn't have those capabilities. Inactivity time scheme is a useful function under this circumstance. If WIZ127SR doesn't receive any data from the serial interface during the time set as the Inactivity Time, then WIZ127SR closes the current established connection itself. But If any character is entered from the serial interface before the Inactivity Time timer is expired, the timer will be reinitialized.

3.2. Data mode and Command mode

WIZ127SR has two operation mode - serial command mode and data mode through serial interface. These are concerned to the communication between host processor and WIZ127SR.

3.2.1. Data mode

Data mode is the default mode of WIZ127SR. After booting, WIZ127SR operates itself as 'Serial to Ethernet; converter. It tries to connect or listens to get peer's connection request. During this mode, WIZ127SR holds the data from host processor via serial interface as just data. If the connection is already established, WIZ127SR transmits the data to peer system, and also receives data which are sent by the peer from Ethernet.

In other words, WIZ127SR transparently bypasses data from Ethernet to serial interface and vice versa without editing those data.

3.2.2. Serial Command mode

In serial command mode, WIZ127SR treats data from host processor as a command. If the command is valid, it sends a proper response. If not it responds with error message. In the serial command mode, there is no data communications between WIZ127SR and peer system. If WIZ127SR enters into serial command mode, it will print out "<E" message through serial interface to inform host processor that it successfully entered into serial command mode.

But when it switches to data mode, it doesn't print out any message.

3.2.3. How to switch the mode

There is a method to switch the mode from data to serial or vice versa. That is using the software triggering.

Software triggering

Host processor can make WIZ127SR enter into serial command mode by issuing software triggering string, which is already set by user through serial interface. User can set this string by the configuration tool, web config page or telnet.

In order to escape from serial command mode, host processor just issues <WR> command. Then, WIZ127SR reboots and operates as data mode.

3.2.4. How to configure WIZ127SR with a whole data

As User wants to configure WIZ127SR in one time operation, he can do it using handling the Hardware trigger pin.

If you supply the power or reset the module with asserting low on pin 12 of JP1, you can

configure the module using special serial commands.

At this mode, network configuration or data communication is not allowed. Therefore, after finishing the configuration, be sure to assert high on pin 12 of JP1 for normal operation.

3.2.4.1. Command Frame Format

Frame Format

Descriptor	STX	Command codes	Parameter	ETX
Length(bytes)	1	1	Variable	1
Format	'>(0x3E)	R / W / X	Variable	'CR'(0x0D)

Table 9. Hardware Configuration Frame format

Command Codes

Command	Comments
R	Read Parameter
W	Write Parameter
X	Exit Hardware Command mode
E	Command Error

Table 10. Hardware Configuration Command Code

Parameter Structure

Parameter Structure																					
Value(bytes count)	Description																				
0008DCxxxxxx(6)	MAC address (xxxxxx is uniquely factory set)																				
01 (1)	Mode (00: TCP Client, 01 : TCP Mixed, 02 : TCP Server)																				
00000000 (4)	IP address																				
00000000 (4)	Subnet mask																				
00000000 (4)	Gateway address																				
0000 (2)	Local Port number (Module's Port Number)																				
00000000 (4)	Server IP address																				
0000 (2)	Server Port number																				
FE (1)	Serial Baud Rate (bps). Default is FE																				
	<table><tr><th>Value(Hex)</th><th>Baud Rate(bps)</th></tr><tr><td>BB</td><td>230,400</td></tr><tr><td>FF</td><td>115,200</td></tr><tr><td>FE</td><td>57,600</td></tr><tr><td>FD</td><td>38,400</td></tr><tr><td>FA</td><td>19,200</td></tr><tr><td>F4</td><td>9,600</td></tr><tr><td>E8</td><td>4,800</td></tr><tr><td>D0</td><td>2,400</td></tr><tr><td>A0</td><td>1,200</td></tr></table>	Value(Hex)	Baud Rate(bps)	BB	230,400	FF	115,200	FE	57,600	FD	38,400	FA	19,200	F4	9,600	E8	4,800	D0	2,400	A0	1,200
	Value(Hex)	Baud Rate(bps)																			
	BB	230,400																			
	FF	115,200																			
	FE	57,600																			
	FD	38,400																			
	FA	19,200																			
	F4	9,600																			
	E8	4,800																			
	D0	2,400																			
	A0	1,200																			

08 (1)	Serial data size (08: 8 bit), (07: 7 bit)
00 (1)	Parity (00: No), (01: Odd), (02: Even)
01 (1)	Stop bit
00 (1)	Flow control (00: None), (01: XON/XOFF), (02: CTS/RTS)
00 (1)	Delimiter character
0000 (2)	Delimiter size
0000 (2)	Delimiter time
0000 (2)	Delimiter inactivity time
00 (1)	Debug code (00: ON), (01: OFF)
03 (1)	Software major version
01 (1)	Software minor version
00 (1)	DHCP option (00: DHCP OFF, 01:DHCP ON)
00 (1)	UDP mode (00: TCP; 01: UDP)
00 (1)	Connection Status (00:not connected, 01: connected)
00 (1)	DNS Flag (00:not use DNS, 01:use DNS)
00000000 (4)	DNS Server IP address
00.....00 (32)	Server Domain Name
00 (1)	Serial command method(00:disable, 01:enable)
2B2B2B (3)	Serial command mode character(Hex)
002020.....2020 (32)	PPPoE ID
002020.....2020 (32)	PPPoE Password
00 (1)	Password option for TCP Server (00:disable, 01:enable)
000000000000000000 (8)	Password for TCP Server
FF	Last Byte (It means end of parameter)

Table 11. Hardware Configuration Parameter descriptions

3.2.4.2. Reply Frame Format

Frame Format

Descriptor	STX	Reply code	Parameter	ETX
Length(bytes)	1	1	Variable	2
Command	'<(0x3C)	S	Variable	'CR"LF'(0x0D0A)

Table 12. Hardware Configuration Reply Frame format

Reply for Entrance Hardware Command Mode (Hex : 0x3B)

[Normal mode]
;
[Debug mode]
WIZ127SR bootloader Ver. 1.0

3.3. How to get the socket status

In order to get the current status of its corresponding sockets, user can monitor its STATUS pin. There are two pins for this function in WIZ127SR.

One, STATUS1, is pin 12 of JP1 and the other, STATUS2, is pin 7 of JP3.

STATUS1(pin 12 of JP1) pin shares the function of Hardware trigger for configuration of WIZ127SR.

STATUS1 is operating as input for checking whether user makes to enter it into Hardware trigger mode during booting of WIZ127SR and after booting, WIZ127SR change STATUS1 pin to output port and this pin notifies what the current status of UART0's corresponding socket is.

As this pin operates as output pin, if its value is LOW, its corresponding socket is disconnected. Otherwise, the connection of the socket is established.

STATUS2 pin is only to notify whether its corresponding socket is connected or not.

The meaning of its signal value is the same to STATUS1.

3.4. How to use extra GPIO Pins

WIZ127SR has extra GPIO pins using to control other devices or get control from other devices.

But, with firmware version 0.9, WIZ127SR doesn't support this function yet.

4. How to configure WIZ127SR

4.1. Configuring with UDP broadcasting and WIZ127SR Configuration Tool

4.1.1. Network Configurations

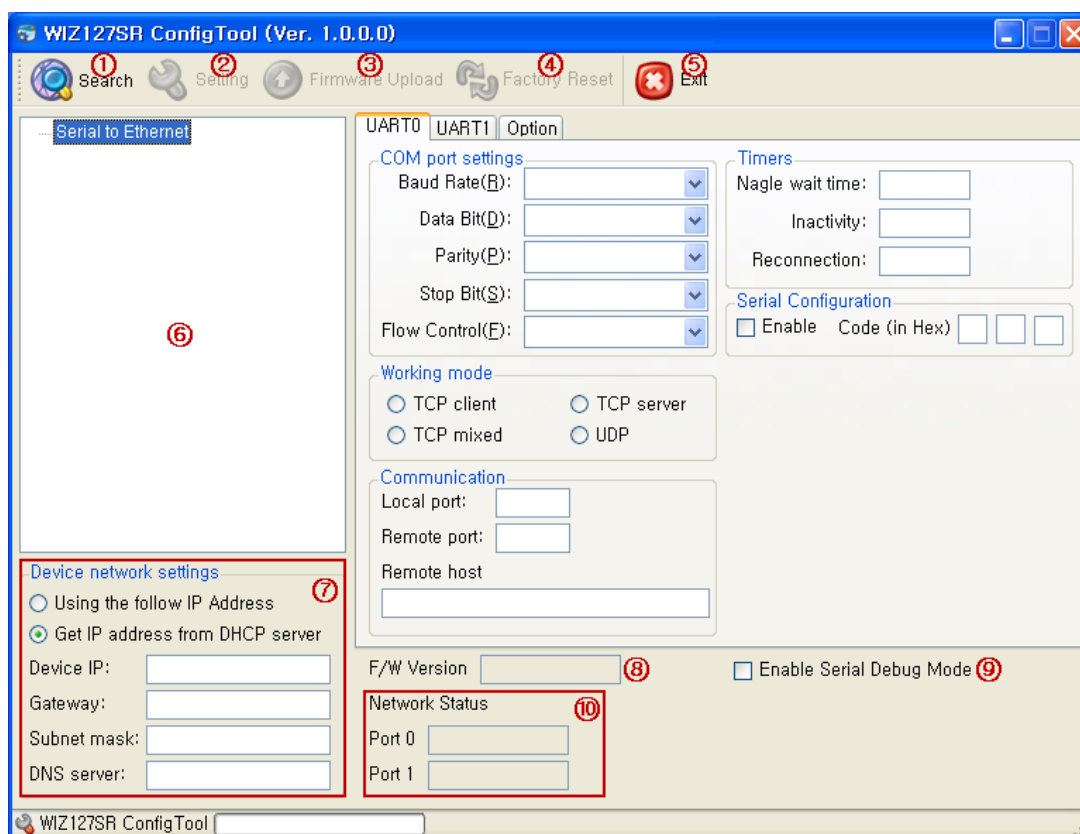


Figure 5. Configuration Tool (Network Configuration)

1) Search

The Search function is used to search for all existing modules on the same LAN. By using UDP broadcast, it finds all modules on the same subnet, and the founded device will be listed in the “Serial to Ethernet” tree(Search Window) with its MAC address.

2) Setting

This function is to apply your configurations.

When you select the MAC address from the “Search Window”, the default value of the module will be displayed. Modify your configurations and click “Setting” button to apply your settings. The module will re-initialize and save the changed configurations.

You can change the configurations by following steps:

- ① Select the MAC address of the device which you would like to modify in the “Search

Window”

- ② Modify the settings according to your needs
- ③ Click the “Setting” button to apply your settings
- ④ The module will be initialized by a re-booting process
- ⑤ To verify your settings, please click ‘Search’ button and view your new settings

3) Firmware Upload

Firmware will be uploaded through your network. The Procedure of Firmware upload is explained details in [“5. How to upload a new firmware”](#)

4) Factory Reset

All setting value is initialized to factory default, if you click the “Factory Reset” button.

For factory default value of WIZ127SR, refer to [“4.4 Factory Default Value of WIZ127SR”](#)

5) Exit

Close the configuration tool program window.

6) Search Window

If you click the “Search” button, all the MAC addresses on the same subnet will be displayed.

7) Device network settings

Static: “Using the follow IP Address” is an option for setting WIZ127SR module’s IP with static IP address..


1. Select a MAC address which you want to set as static IP in the “Search Window”.
2. Check “Using the follow IP address”.
3. The “Device IP, Gateway, Subnet mask, DNS server” box will be enabled, and then input address in those fields.
4. Click the “Setting” button to apply your configurations.

DHCP: Select “Get IP address from DHCP server” option to use the DHCP mode.

1. Select the MAC address on the “Search Window”.
2. Check “Get IP address from DHCP server” and click the ‘Setting’ button.
3. A module will acquire network information from the DHCP server. (Should wait a moment to acquire network information from the DHCP server.)
4. When a module on the “Search Window” is selected, the IP address, Subnet mask and Gateway are displayed. If the module could not acquire the network information from the DHCP server, the IP address, the Gateway Address and the Subnet mask will be initialized as 0.0.0.0.

IP Address Information

- Device IP: WIZ127SR's IP Address
- Gateway: WIZ127SR's Gateway Address
- Subnet mask: WIZ127SR's Subnet Mask
- DNS server: DNS Server's IP Address

 **If you are unclear about your Local IP, Subnet Mask, Gateway information, you have to get this information from your network administrator. If the IP address is not correct, IP collision or network problems may occur.**

8) F/W Version

It displays the firmware version.

9) Enable Serial Debug Mode

If this mode is enabled, you can monitor the status and socket messages of WIZ127SR through the serial terminal (listen OK, connect fail and etc.). In this mode, debug messages can cause abnormal operation of the serial device. Therefore, you should use this mode only for debugging.

10) Network Status

This field shows the Connection Status of UART0 and UART1 in WIZ127SR. The message "Connected" will be displayed when a peer successfully connects to WIZ127SR.

4.1.2. Serial Configuration

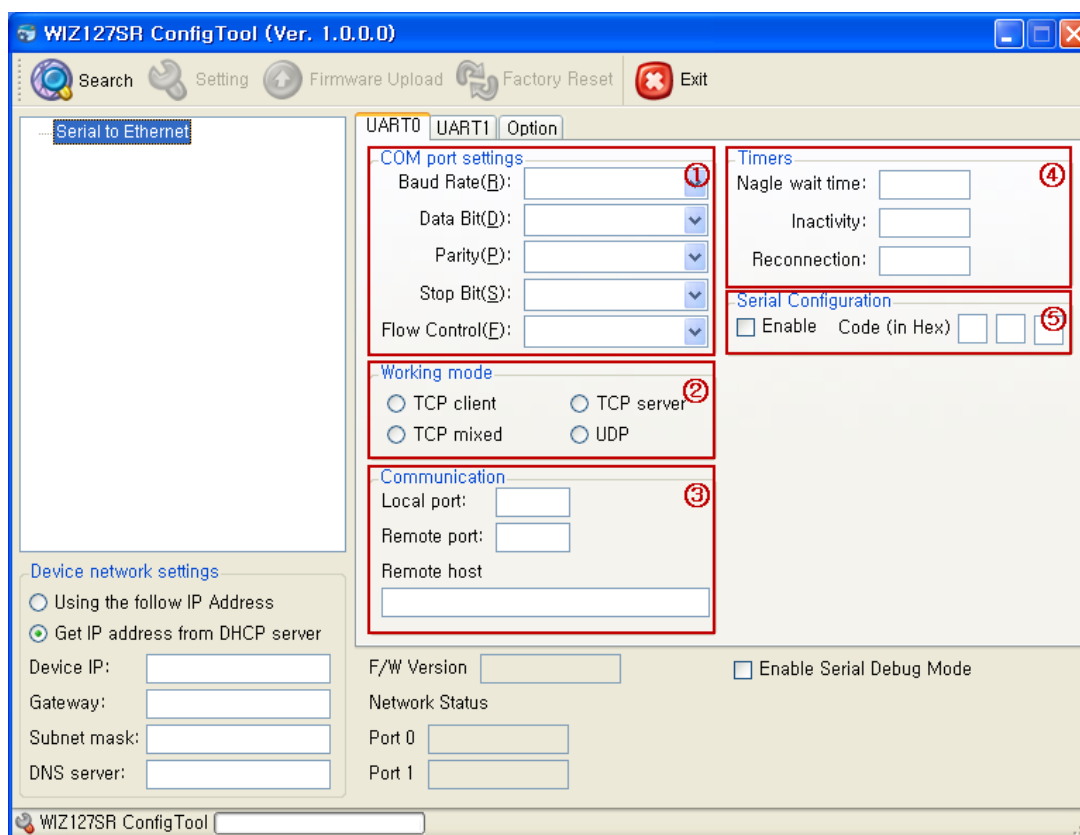


Figure 6. Configuration Tool (Serial Configuration)

You should set to UART configuration after checking UART tab whether it is UART0 or UART1. The numbers on the screenshot correspond to the descriptions listed below.

1) COM port setting

This menu is used for setting the serial port.

 **In order to apply your settings, click the “Setting” button**

2) Working mode

Client / server / mixed: This is to select the communication method based on TCP. TCP is the protocol to establish the connection before data communication, but UDP just processes the data communication without connection establishment. The Network mode of WIZ127SR can be divided into TCP Server, TCP Client and Mixed mode according to the connection establishing method. At the TCP server mode, WIZ127SR operates as server on the process of connection, and waits for the connection trial from the client. WIZ127SR operates as client at the TCP Client mode on the process of connection, and tries to connect to the server's IP and Port. Mixed

modes supports both of Server and Client. The communication process of each mode is as below.

TCP server mode Communication

At the TCP Server mode, WIZ127SR waits for the connection requests.

TCP Server mode can be useful when the monitoring center tries to connect to the device (where WIZ127SR is installed) in order to check the status or provide the commands. In normal time WIZ127SR is on the waiting status, and if there is any connection request (SYN) from the monitoring center, the connection is established (ESTABLISH), and data communication is processed (Data Transaction). Finally connection is closed (FIN).

In order to operate this mode, "Device IP", "Subnet mask", "Gateway" and "Local port" should be configured first.

The Data transmission proceeds as follows,

1. The host connects to the WIZ127SR which is configured as TCP Server mode.
2. As the connection is established, data can be transmitted in both directions – from the host to the WIZ127SR, and from the WIZ127SR to the host

TCP client mode Communication

If WIZ127SR is set as TCP Client, it tries to establish connection to the server.

To operate this mode, "Device IP", "Subnet mask", "Gateway", "Remote host", and "Remote port" should be set. If "Remote host" has domain name, you should be confirmed the "DNS server" field.

In TCP Client mode, WIZ127SR can actively establish a TCP connection to a host computer when power is supplied.

The Data transmission proceeds as follows:

1. As power is supplied, WIZ127SR board operating as TCP client mode actively establishes a connection to the server.
2. If the connection is complete, data can be transmitted in both directions – from the host to the WIZ127SR and from WIZ127SR to the host

Mixed mode Communication

In this mode, WIZ127SR normally operates as TCP Server and waits for the connection request from the peer. However, if WIZ127SR receives data from the serial device before connection is established, it changes to the client mode and sends the data to the server IP. Therefore, at the mixed mode, the server mode is operated prior to the client mode.

As like TCP Server mode, the Mixed mode is useful for the case that the monitoring center tries to connect to the serial device (in which WIZ127SR is used) to check device status. In addition

to this, if any emergency occurs in the serial device, the module will change to Client mode to establish the connection to the server and deliver the emergency status of the device.

UDP mode Communication

UDP is not a connection oriented protocol. But the communication port should also be defined well. If the UDP mode is selected, the data from serial interface can be defined where to delivery via the “Remote host” and “Remote port”, and the WIZ127SR can also be defined where to receive Ethernet data from via the “Remote host” and “Local port” definition. If the data destination and source are the same, the two IP address will also be the same. Please note the destination and source are using the same port.

3) Communication

When your module is set as “Client mode”, “Mixed mode” or “UDP mode”, peer IP and port should be set in order for WIZ127SR to connect to the server(or peer).

- **Local port:** This field is to set the network port number in WIZ127SR.

 **You should set to different port number from each other UART port.**

- **Remote port:** This field is to set the network port number in remote device.
- **Remote host:** This field is to set the network address. (IP address or Domain name) of remote device.

If your application needs the DNS function, input the domain name of connecting node (E.g.: www.wiznet.co.kr) into “Remote host” field and the DNS Server IP address into “DNS server” field. Domain Name System (DNS) is a database system that associates the Domain name with the actual IP address. The purpose of the DNS system is to resolve the Domain name and represent it as an IP address. As a result, your device can connect to an actual IP address.

4) Timers

- **Nagle wait time:** Normally, Data which received from UART are sent to Ethernet immediately. But in many case, user want to send data as a chunk of the whole frame without separated ones. This option is for packetizing data to one frame. Ordinarily there is some delay between one frame of data and the next one.

This field is for specifying time value to judge whether one frame is received totally. If the time specified in this field is expired after receiving one byte, then WIZ127SR notice one data frame

is finished, make an Ethernet packet with all data in its serial buffer and send it to the peer system via Ethernet. If WIZ127SR receives another byte from UART before the specified time is expired, it restart timer and add the received one to the end of serial data buffer. ('0': Function Disable)

- **Inactivity:** When there is no data transmission, the connection will be closed automatically after the time specified in the Inactivity time. If the default value '0' is set as the Inactivity time, the network connection is maintained even though there is no data transmission. In order to close the connection, you should use the 'Close' commands. This function is useful when you have two or more systems which are connected to the WZ127SR module. When one system is connected to the WIZ127SR, other systems cannot connect to the module simultaneously. If you defined a time in the Inactivity time, the other system can connect to the module after the inactivity time elapsed. Inactivity Time can also be used when the server system is unexpectedly shut down. In this case, there will not be any data communication. After the time defined in the Inactivity time elapsed, WIZ127SR will close the connection and enter into waiting state.

- **Reconnection:** The connection retry interval. (Client mode only)

5) Serial Configuration

This function is for module configuration not through network with configuration tool, web configuration and telnet but through serial communication. At the default status, the serial command mode is disabled. When you want to set WIZ127SR via serial communication, check "enable".

4.1.3. Option Configuration

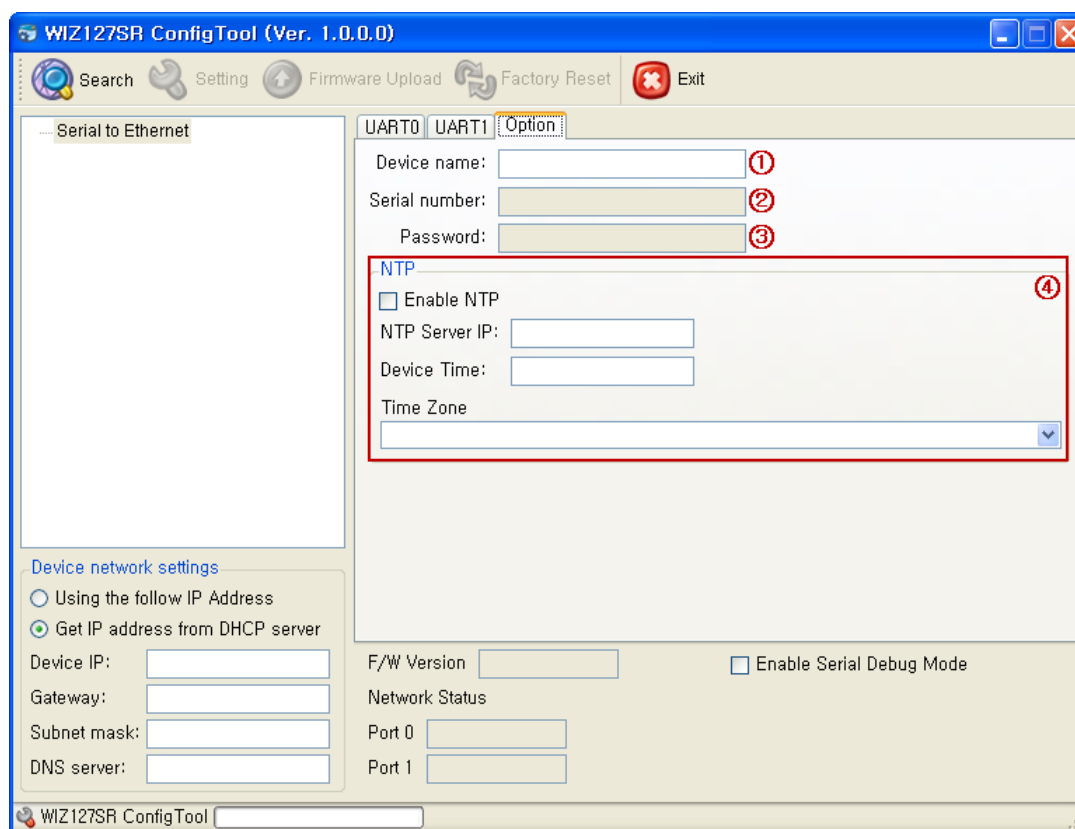


Figure 7. Configuration Tool (Option Configuration)

You should set to UART configuration after checking UART tab whether it is UART0 or UART1. The numbers on the screenshot correspond to the descriptions listed below.

1) Device name

The device name is displayed in this area.

2) Serial number

The serial number of device is displayed in this area.

3) Password

The password that is used for web configuration and telnet is displayed in this area. The shown password is encrypted by MD5.

If you want to change the password, double-click the text-box and then type your password in ASCII codes.

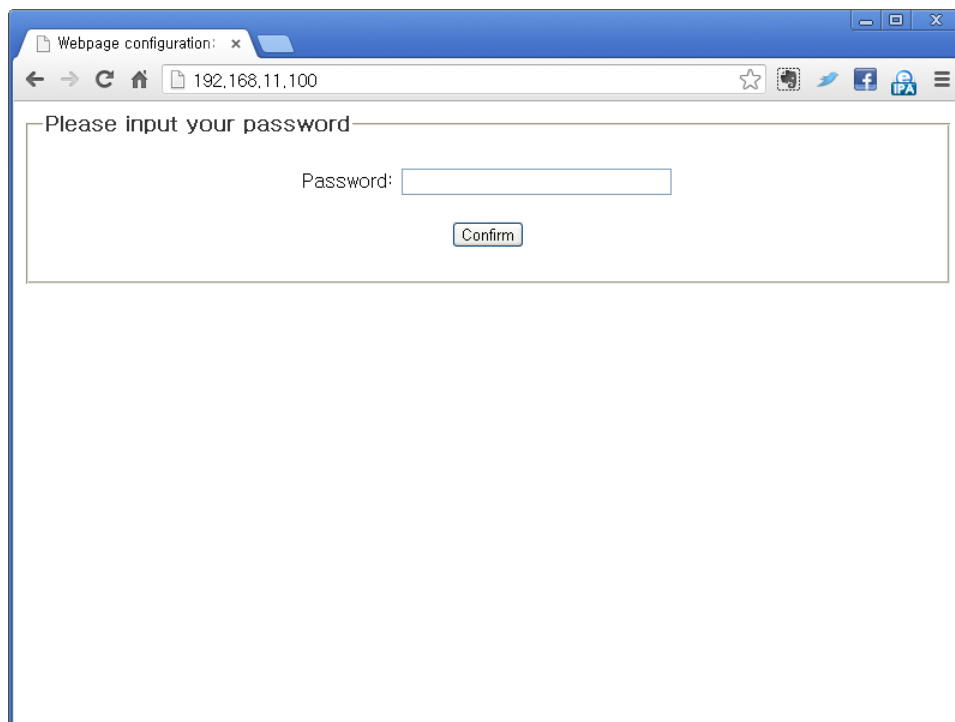
4) NTP

NTP(Network Time Protocol) is a protocol for clock synchronization between computer systems over the networks. This function is reserved for customization. In case of standard version, this function just working for clock synchronization and display the time to configuration tool and web page.

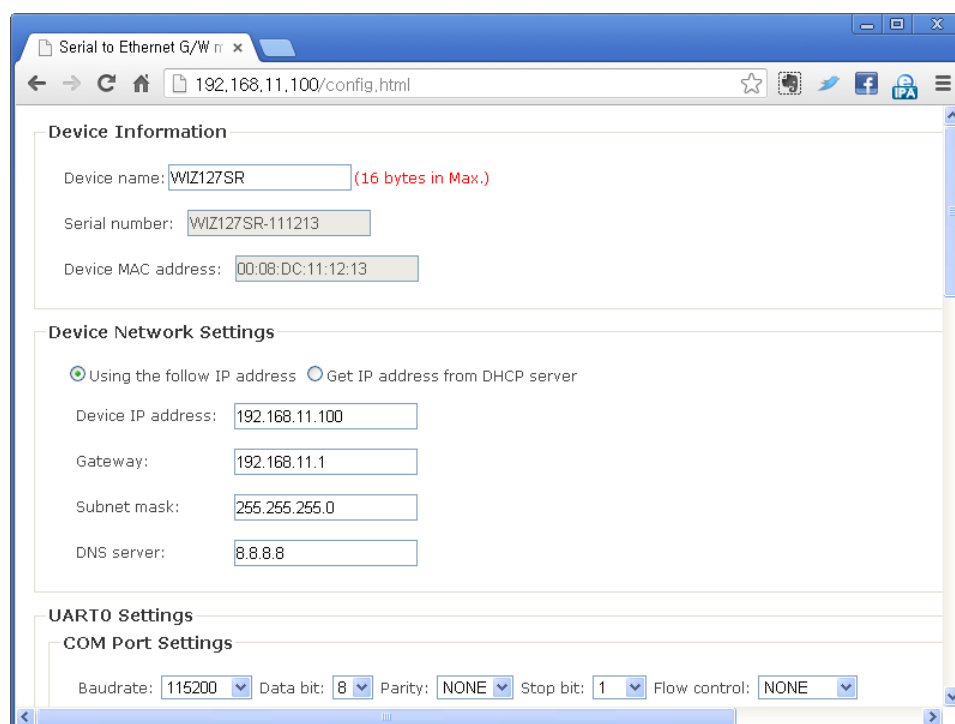
- **Enable NTP:** This check-box is to set the enable/disable of NTP.
- **NTP Server IP:** This field is to set the NTP server IP address.
- **Device Time:** This field is to shown the current time of WIZ127SR.
- **Time Zone:** This field is to set the time zone of your country.

4.2. Configuring with Web browser

Open the web browser and input the IP address of the module. The first page will request the user password as shown in below figure.

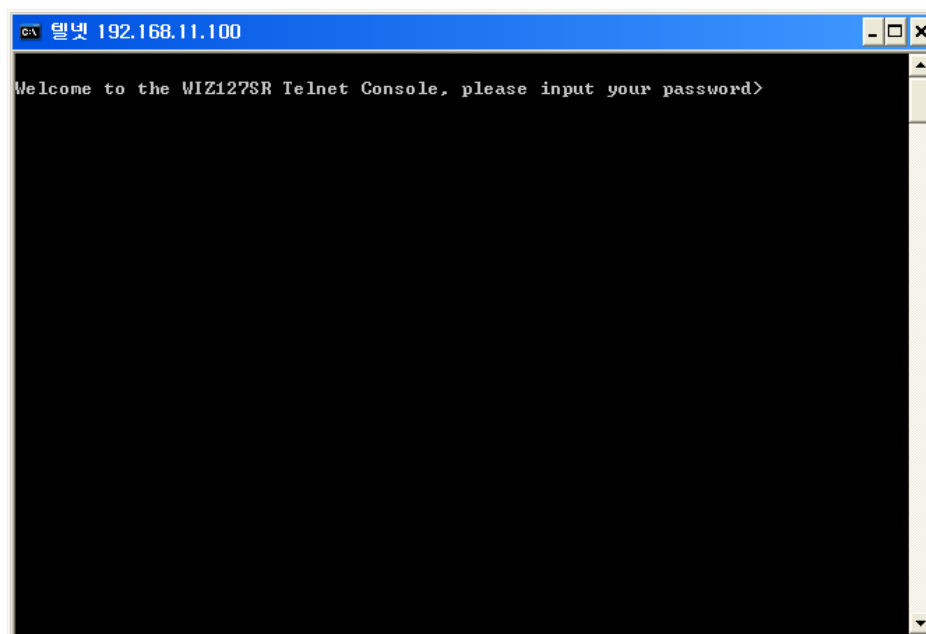


If you input the password (the default value is WIZ127SR), the configuration page will be displayed. You can set the configuration parameters of network and serial.

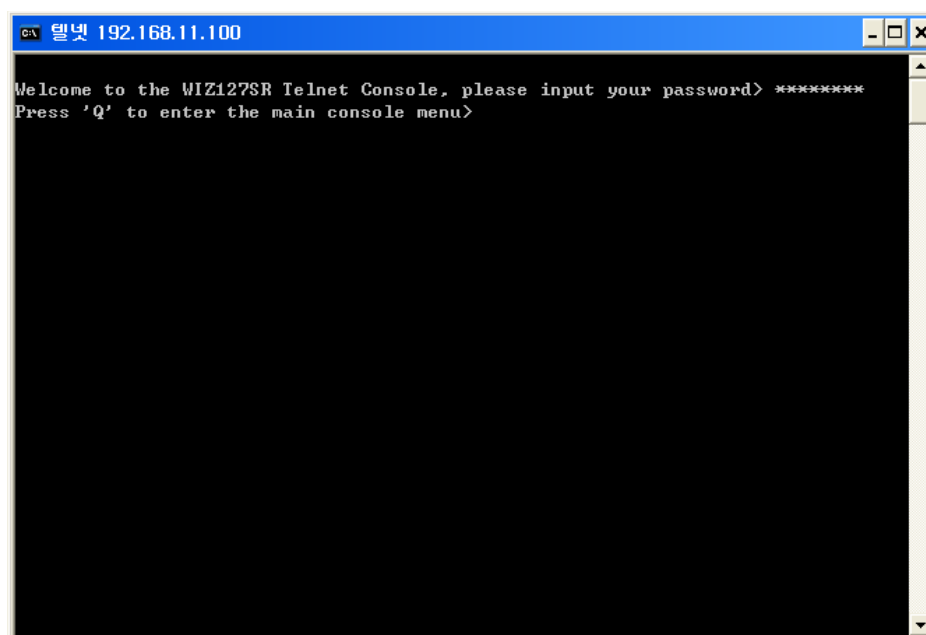


4.3. Configuring with Telnet

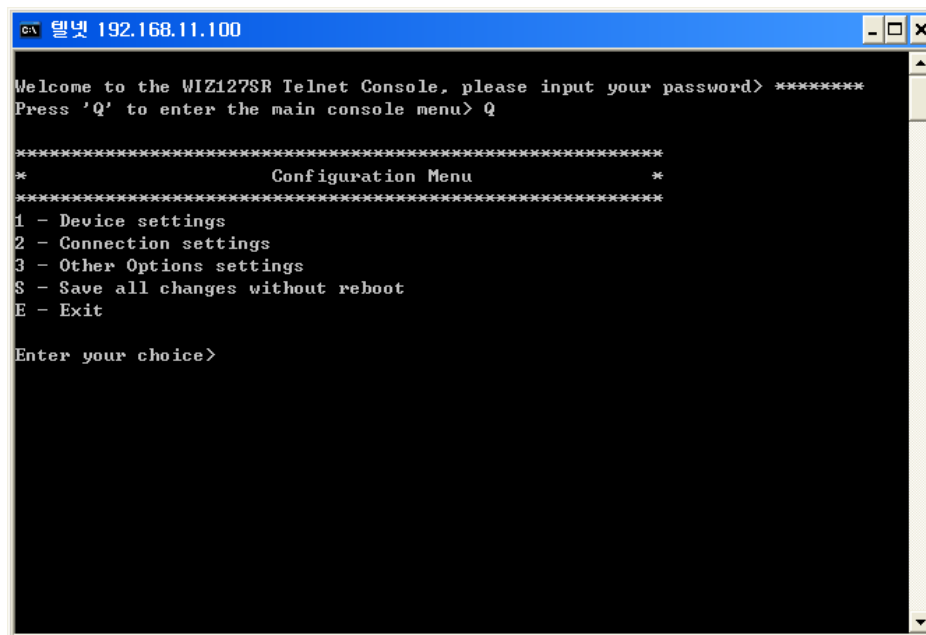
You can configure the WIZ127SR by using Telnet Client(*) program. If you connect to the WIZ127SR, you can see the message of requesting user password.



Input the user password (Default P/W : WIZ127SR). You can see the message “Press ‘Q’ to enter the main console menu”.



If you input the ‘Q’, the main menu for the WIZ127SR configuration is displayed.



```
텔넷 192.168.11.100

Welcome to the WIZ127SR Telnet Console, please input your password> *****
Press 'Q' to enter the main console menu> Q

*****
*                               *
*          Configuration Menu          *
*                               *
*****
1 - Device settings
2 - Connection settings
3 - Other Options settings
$ - Save all changes without reboot
E - Exit

Enter your choice>
```

(*) You can use the Telnet client program which is provided by Windows OS. At the Windows XP, you can use the Telnet client program without additional setting. However at the Windows Vista or above version, you must enable the Telnet Client program first. For the detail, refer to the site <http://goo.gl/Plhyu>.

4.4. Factory Default Values of WIZ127SR

Category	Item	Value
Common	Debug Message Enable	1 (Enable)
	DHCP Enable	0 (Disable)
	Local IP	192.168.11.100
	Gateway IP	192.168.11.1
	Subnet mask	255.255.255.0
	DNS Server IP	8.8.8.8
	Password	WIZ127SR
	Device Name	WIZ127SR
	NTP Enable	0 (Disable)
	NTP Server IP	128.138.140.44
	Time Zone	40) UTC+09:00
UART0	Serial Configure Enable	0 (Disable)
	Serial Configure Trigger	0x2b 0x2b 0x2b (“+++”)
	Working Mode	TCP mixed
	Local Port	5000
	Remote Server IP	192.168.11.101
	Remote Server Port	5001
	Baudrate	115200
	Data bit	8
	Parity	NONE
	Stop Bit	1
	Flow Control	NONE
	DNS Enable	0 (Disable)
	Domain	-
	Nagle Time	0 (ms)
	Inactivity Time	10 (seconds)
	Reconnection Time	1000 (ms)
UART1	Working Mode	TCP mixed
	Local Port	5001
	Remote Server IP	192.168.11.101
	Remote Server Port	5002
	Baudrate	115200
	Data bit	8
	Parity	NONE

	Stop Bit	1
	Flow Control	NONE
	DNS Enable	0 (Disable)
	Domain	-
	Nagle Time	0 (ms)
	Inactivity Time	10 (seconds)
	Reconnection Time	1000 (ms)

4.5. Hardware Flow Control Diagram (RS232 Level)

4.5.1. CTS/RTS Mode Timing Diagram

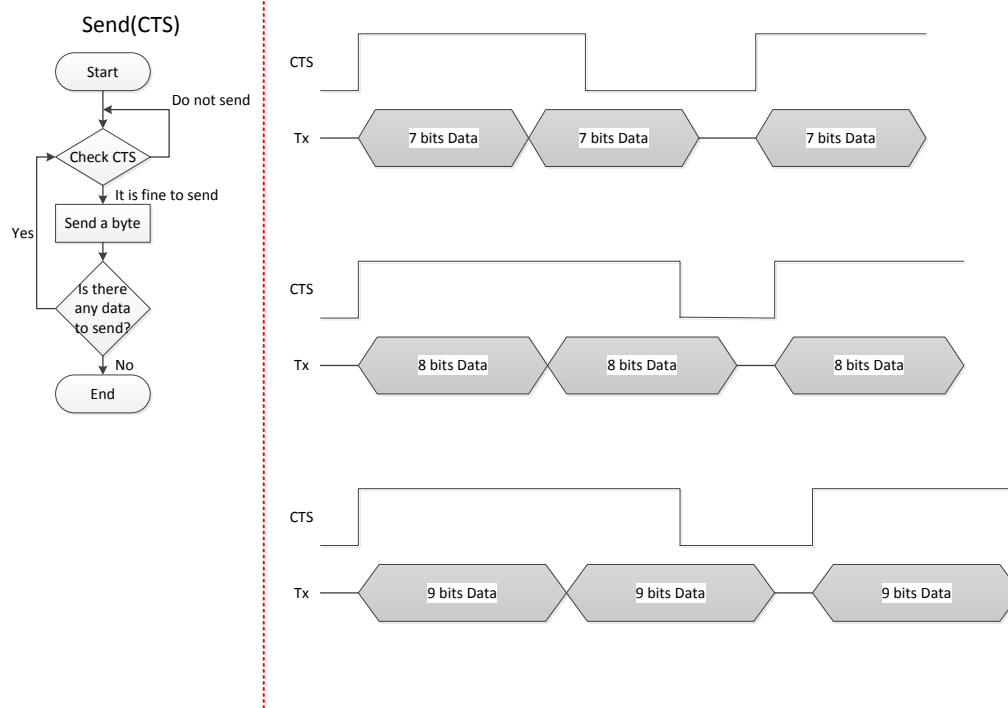


Figure 8. CTS signal Timing Diagram under CTS/RTS mode

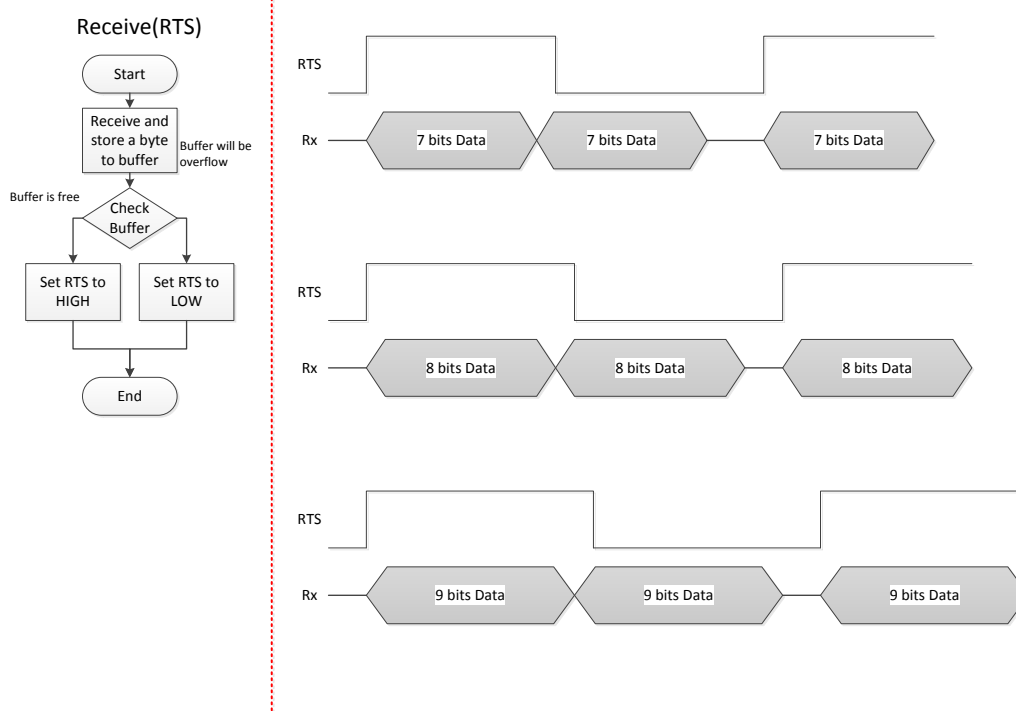


Figure 9. RTS signal Timing Diagram under CTS/RTS mode

4.5.2. DTR/DSR mode Timing Diagram

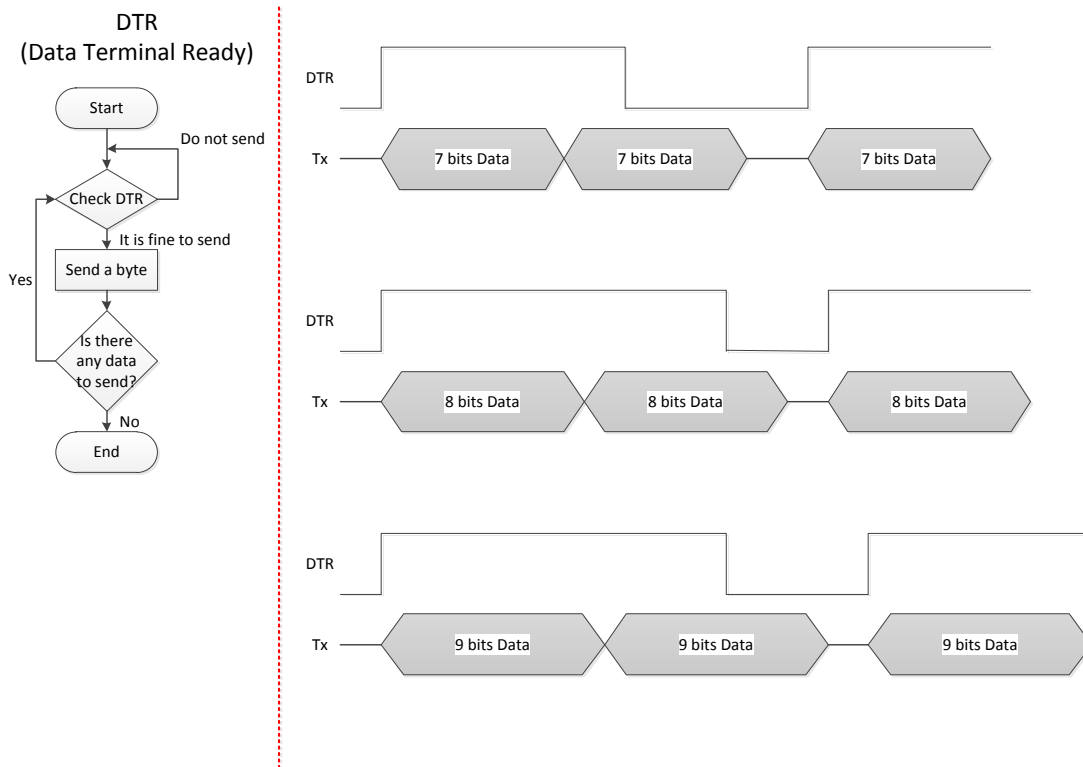


Figure 10. DTR signal timing diagram under DSR/DTR mode

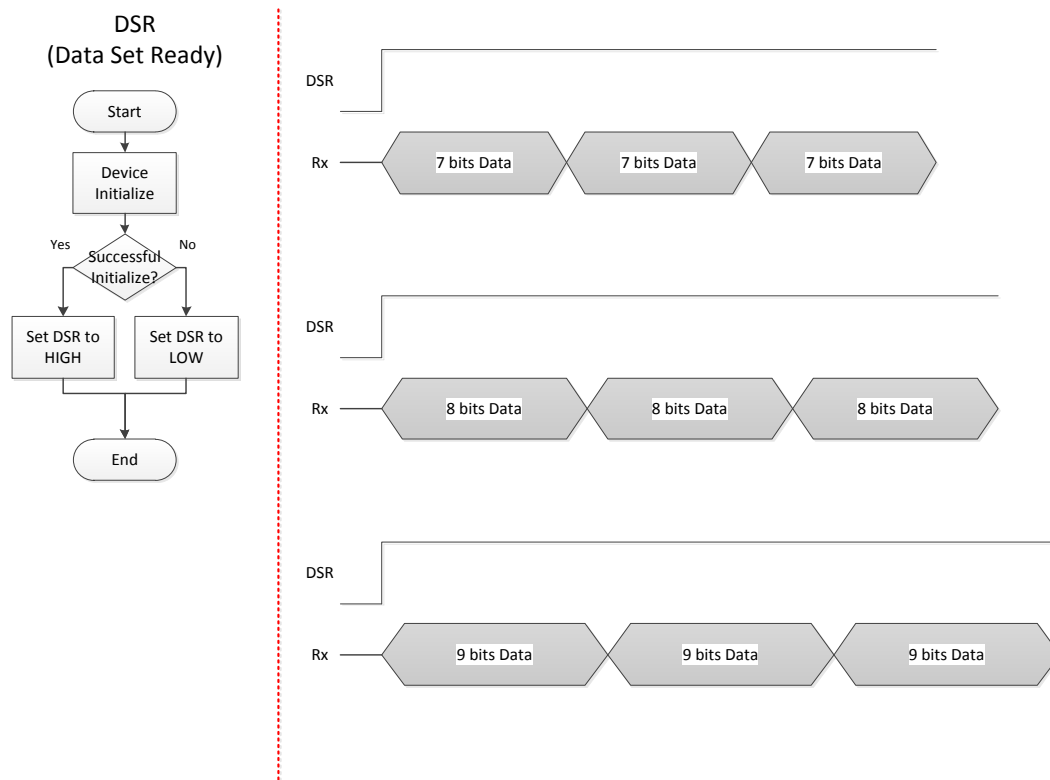


Figure 11. DSR signal Timing Diagram under DSR/DTR mode

4.5.3. RTS Only mode Timing Diagram

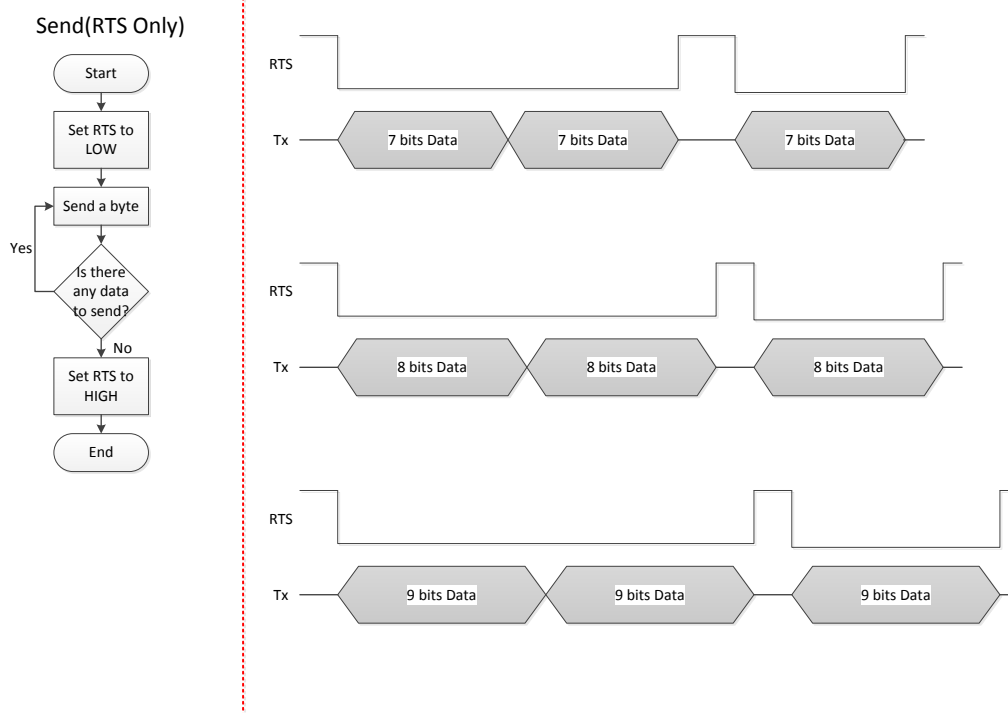


Figure 12. RTS signal Timing Diagram under RTS only mode

5. How to upload a new firmware

Run “WIZ127SR Configuration Tool” program, and click the “Search” button.

If the module is properly connected to the network, the MAC address will be displayed on the “Search Window” as shown in Figure 4.

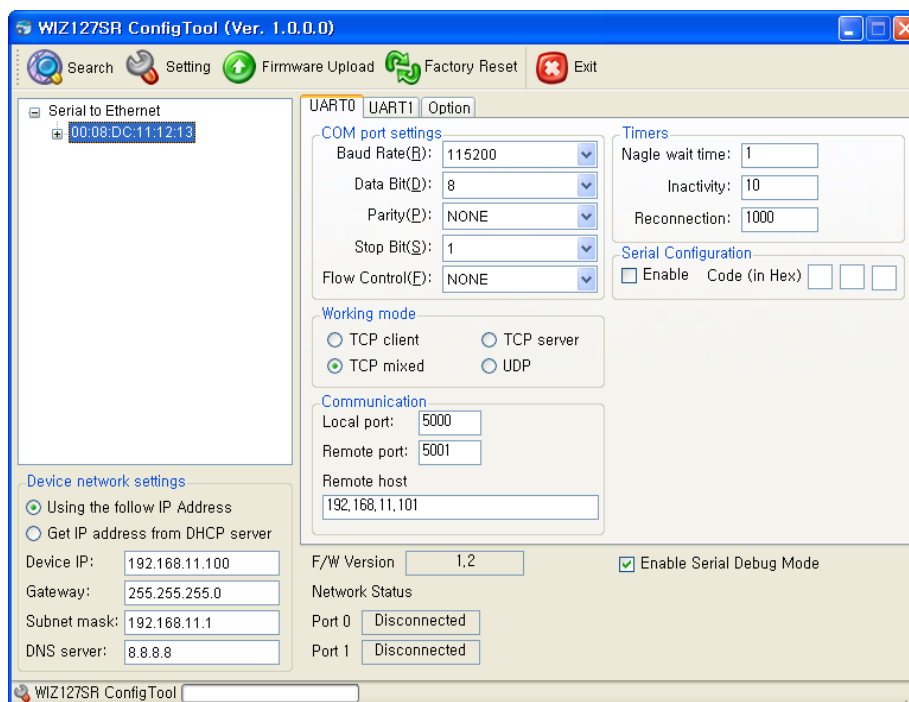


Figure 13. Configuration Tool

Select a module shown in the “Search Window”, and click the “Firmware Upload” button.

Before uploading the firmware through Ethernet, you should set the network information of WIZ127SR first, by Configuration Tool program as shown above in Figure 4. By using Ping test, you can check whether your network is configured correctly or not.

When the window as shown in Figure 5 is displayed, select file to upload and click the “Open” button.

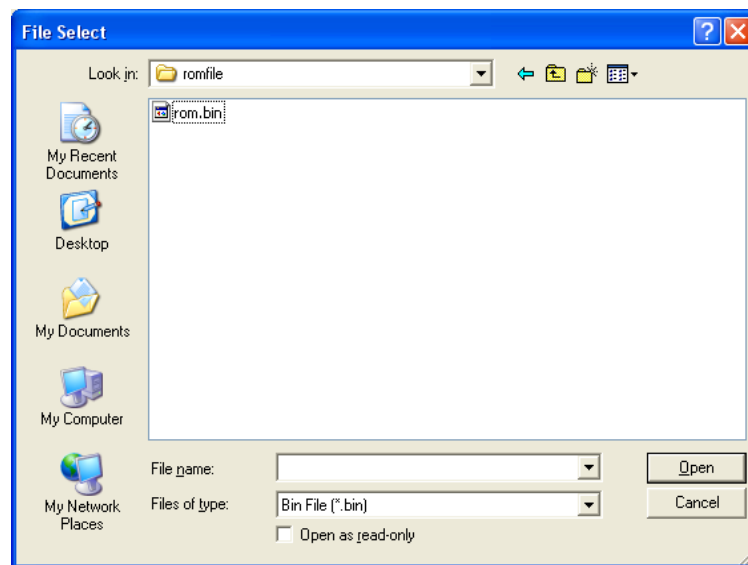


Figure 14. Open dialog box for uploading

 **Do not upload any other files except for WIZ127SR application firmware file.**

The progress bar will be displayed as below.

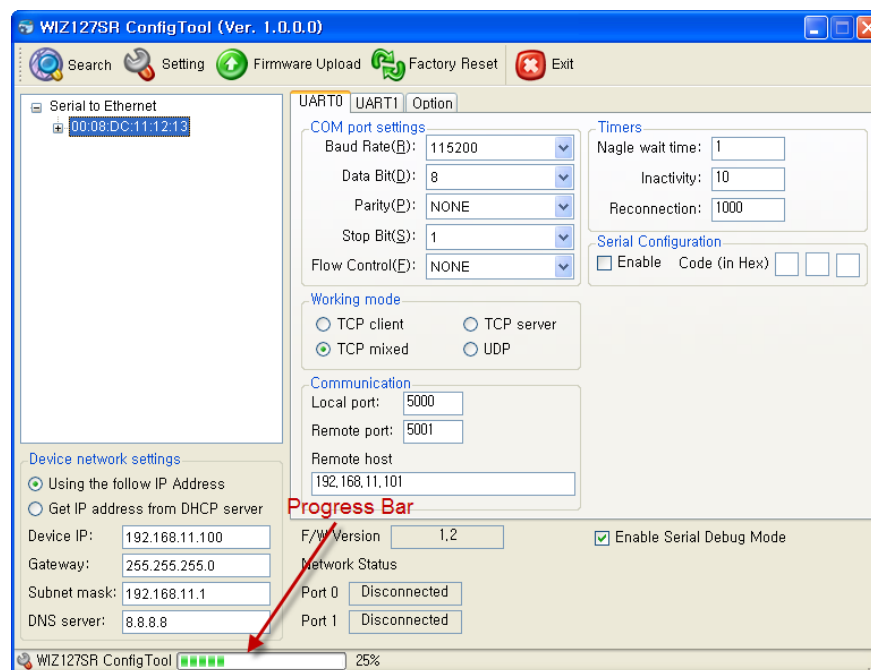


Figure 15. Firmware uploading window

When uploading is completed, a message box with “Firmware download over” will be displayed as shown in Figure 7.

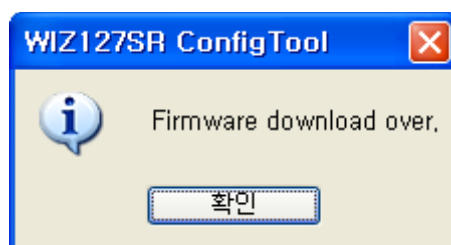
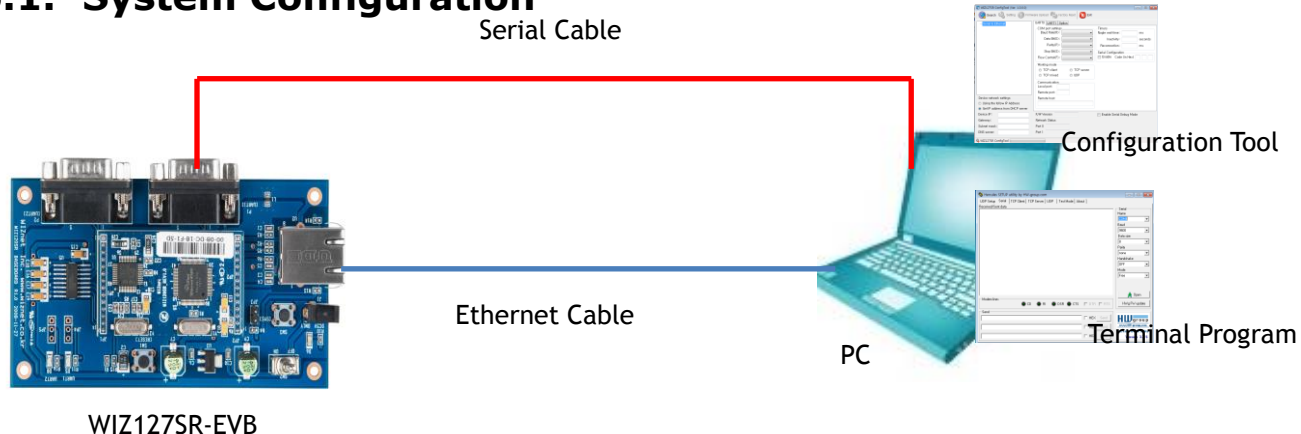


Figure 16. Complete Uploading

6. Quick Installation and Test

In this chapter, we will provide a example for you to learn how to install and test “Serial to Ethernet” data communication with the WIZ127SR.

6.1. System Configuration



- Hardware
 - PC having a RS-232 serial port and Ethernet port
 - WIZ127SR & WIZ127SR Base Board
 - Ethernet Cable (Direct or Crossover Cable)
- Software
 - WIZ127SR Configuration Tool
 - Hyper Terminal

6.2. Testing Procedure

6.2.1. Hardware Connection

- ① Connect the PC and WIZ127SR base board (in which the module is plugged) with serial cable
- ② Connect the PC and WIZ127SR base board by using Ethernet cable.
- ③ Supply the power to the test board.

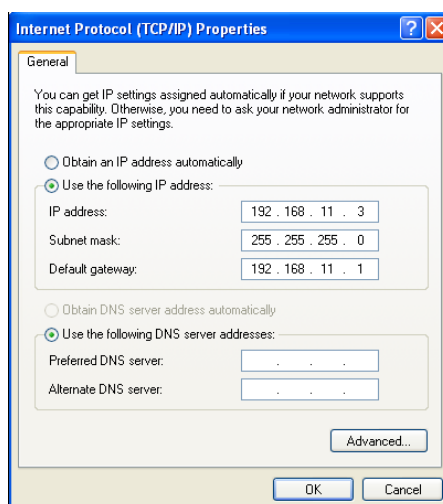
6.2.2. Module Configuration

- ① In this manual, we are going to test the module with following configuration.

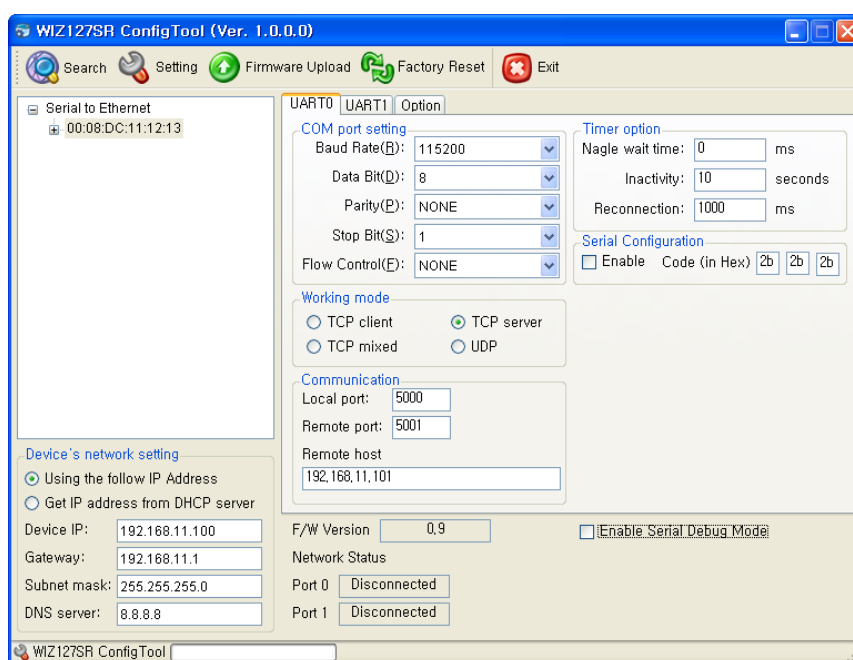
Category		Parameters
Network Configuration	IP Address	192.168.11.100
	Subnet	255.255.255.0

	Gateway	192.168.11.1
	Local port	5000
COM Port setting	Baud Rate	115,200
	Data bit	8
	Parity	None
	Stop bit	1
	Flow Control	None
Working mode		TCP server

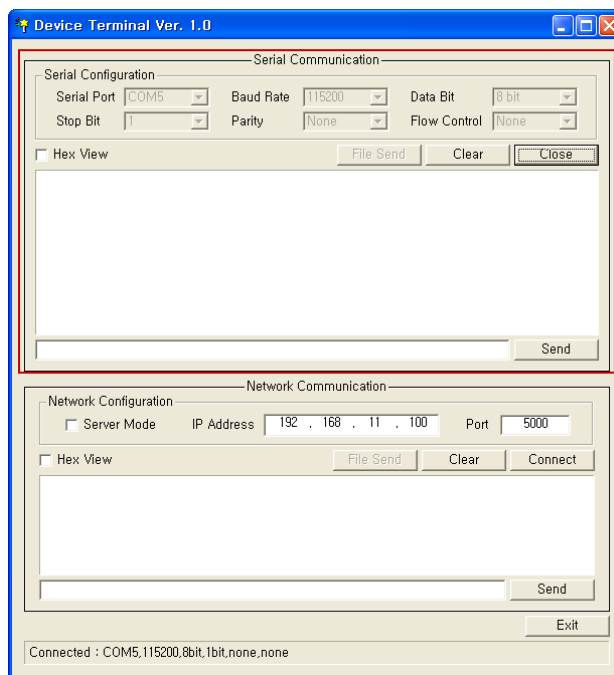
- ② Check the network configuration of the PC and set the appropriate value. Both of module and PC should be in the same network. Therefore, the IP address of the PC should be 192.168.11.xxx with the subnet 255.255.255.0.



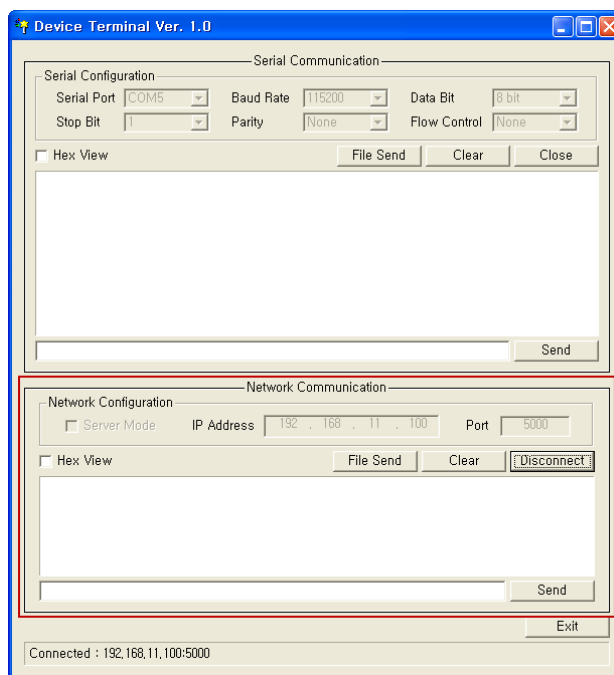
- ③ Execute the configuration tool program and search the module. Set the all parameters as indicated in



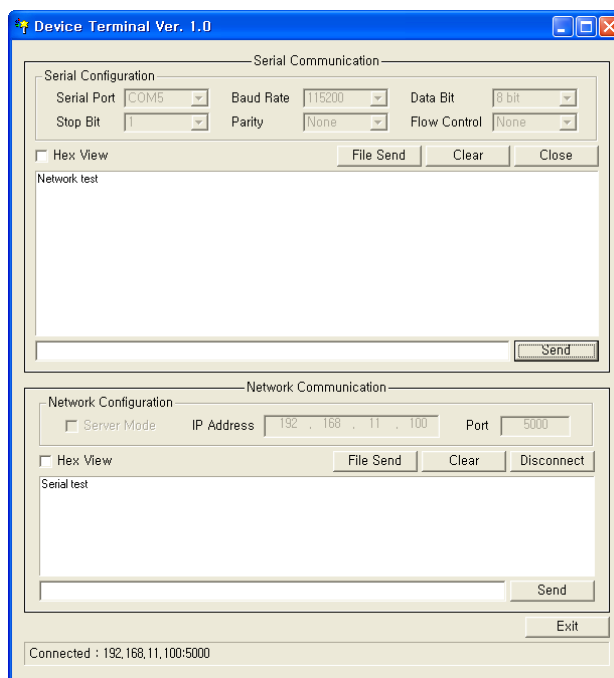
- ④ Check the COM port status of the PC and open the serial terminal.



- ⑤ Check the IP Address and port of WIZ127SR and connect to WIZ127SR.



- ⑥ If you input some characters at the windows of serial, you can see they are displayed in the TCP window.
- ⑦ Vice versa, type some characters in the windows of TCP Client, you can see the characters are displayed in the serial Windows.



7. Warranty

WIZnet Co., Ltd offers the following limited warranties applicable only to the original purchaser. This offer is non-transferable.

WIZnet warrants our products and its parts against defects in materials and workmanship under normal use for period of standard ONE(1) YEAR for the WIZ127SR board and labor warranty after the date of original retail purchase. During this period, WIZnet will repair or replace a defective products or part free of charge.

Warranty Conditions:

The warranty applies only to products distributed by WIZnet or our official distributors.

The warranty applies only to defects in material or workmanship as mentioned above. The warranty applies only to defects which occur during normal use and does not extend to damage to products or parts which results from alternation, repair, modification, faulty installation or service by anyone other than someone authorized by WIZnet Co., Ltd. ; damage to products or parts caused by accident, abuse, or misuse, poor maintenance, mishandling, misapplication, or used in violation of instructions furnished by us ; damage occurring in shipment or any damage caused by an act of God, such as lightening or line surge.

Procedure for Obtaining Warranty Service

Contact an authorized distributors or dealer of WIZnet Co., Ltd. for obtaining an RMA (Return Merchandise Authorization) request form within the applicable warranty period.

Send the products to the distributors or dealers together with the completed RMA request form.

All products returned for warranty must be carefully repackaged in the original packing materials.

Any service issue, please contact to sales@wiznet.co.kr