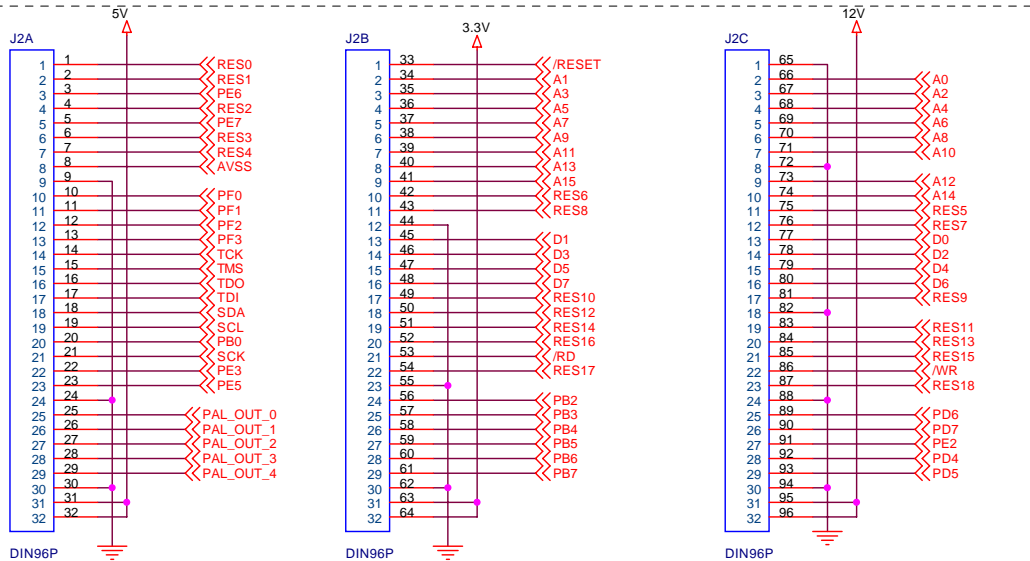
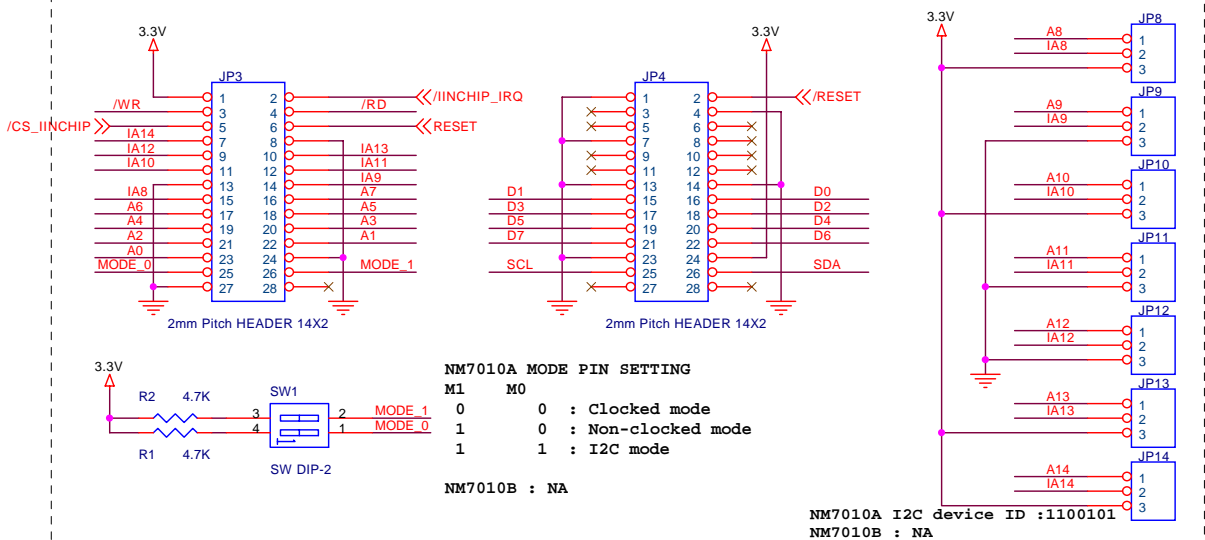


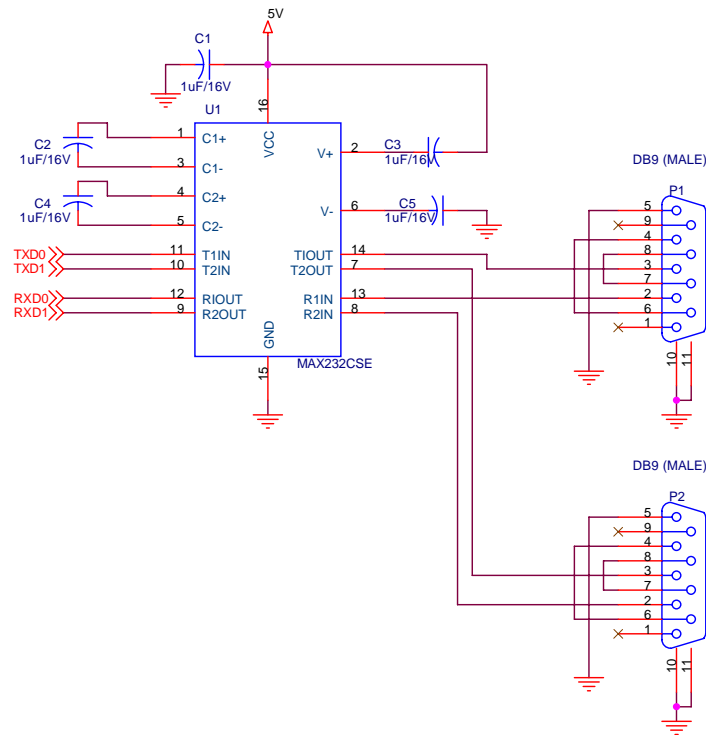
# Expanded Board Interface



# NM7010X Interface

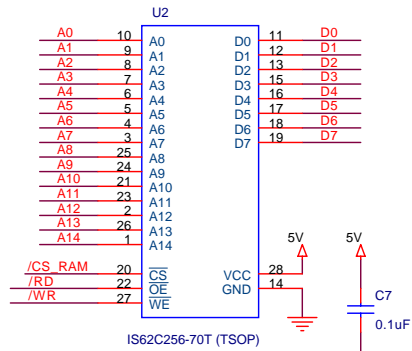


# RS232 2Port

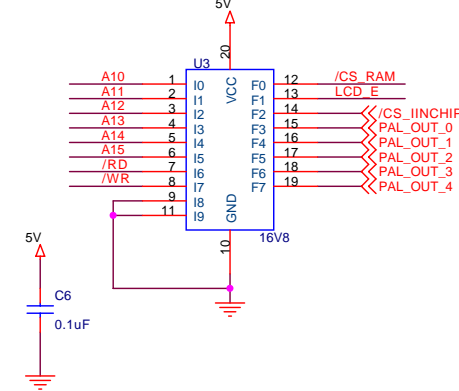


Title		
MB-EVB-X1		
Size	Document Number	Rev
B	<Doc>	1.0
Date: Friday, August 12, 2005		
Sheet 1 of 3		

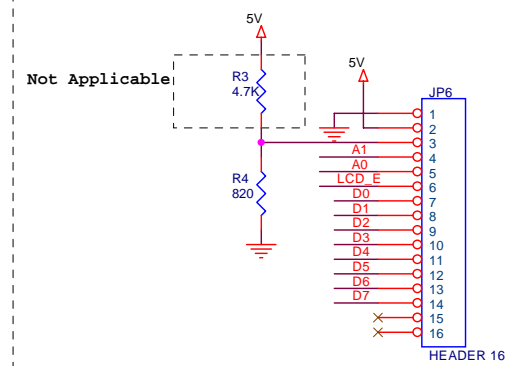
# SRAM



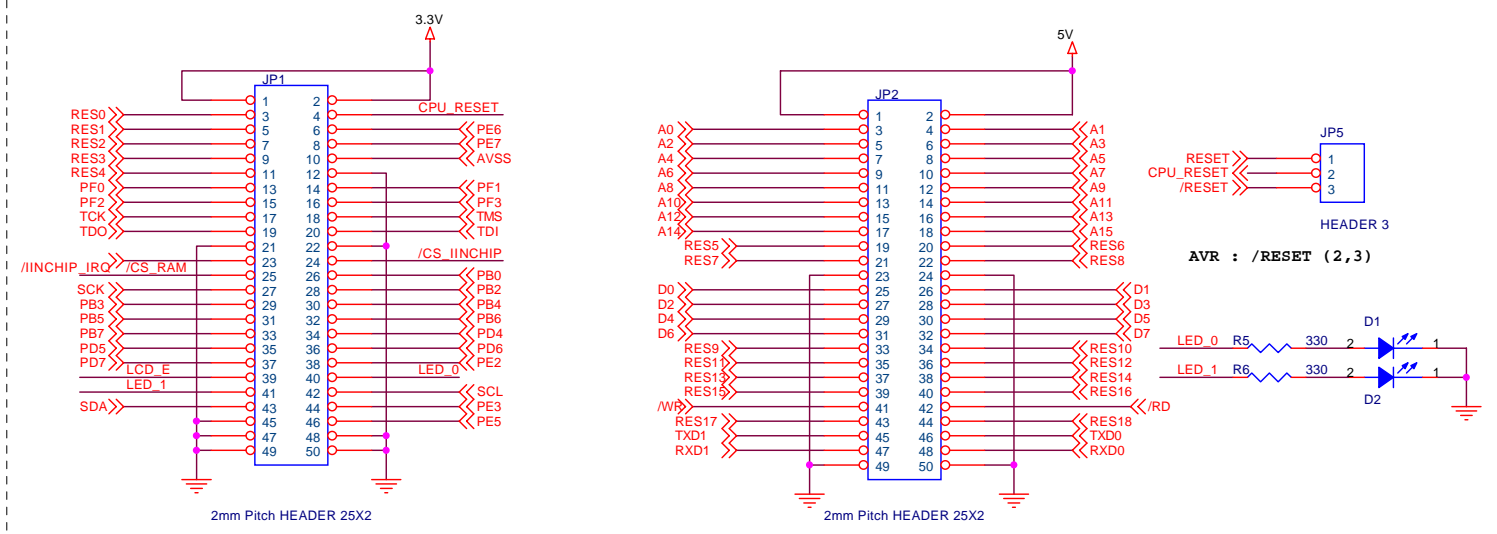
# GAL



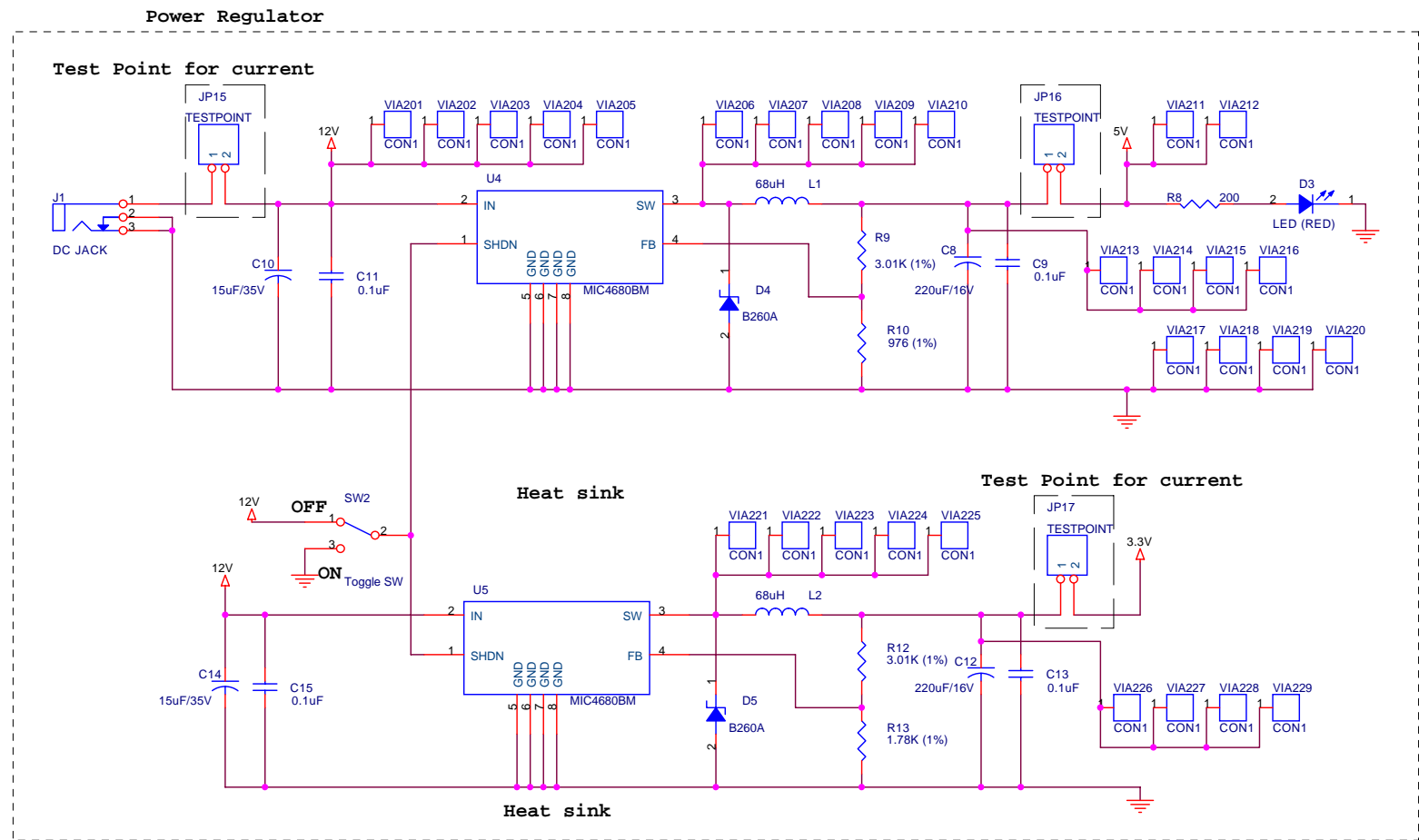
# LCD



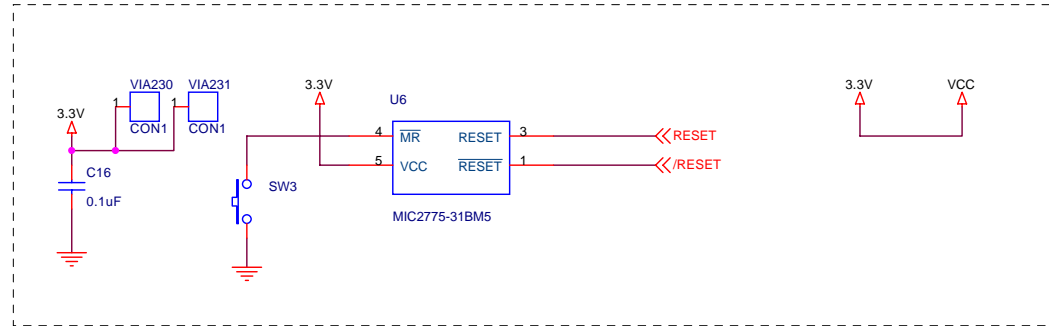
# PM-A1 Module Interface



Title		
MB-EVB-X1		
Size	Document Number	Rev
B	<Doc>	1.0
Date:	Friday, August 12, 2005	Sheet 2 of 3



### 3.3V Power On System Reset



Title		
MB-EVB-X1		
Size B	Document Number <Doc>	Rev 1.0
Date:	Monday, April 11, 2005	Sheet 3 of 3